

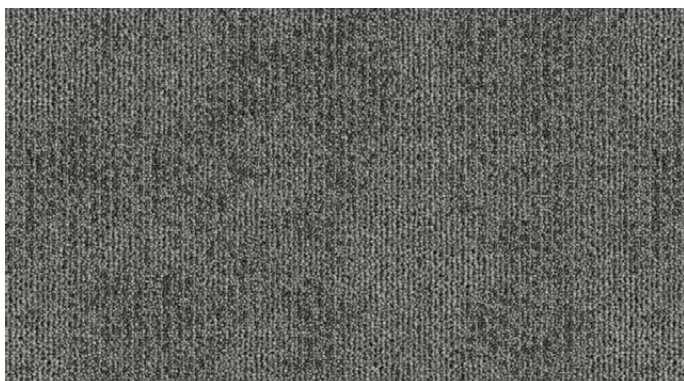
# Cumulus



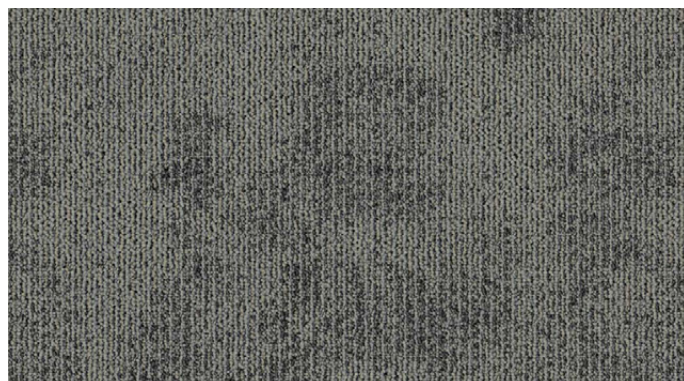
540  
**BILLOW**



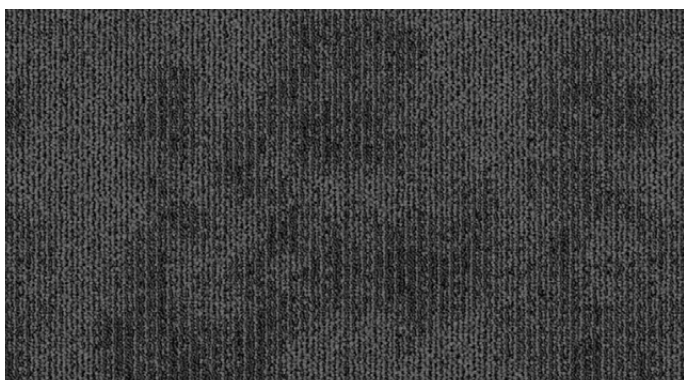
720  
**CALVUS**



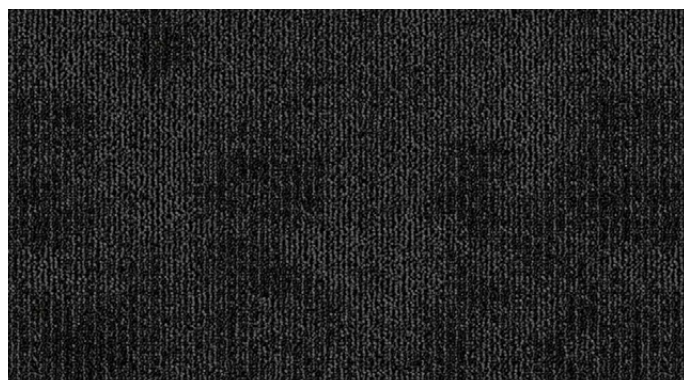
750  
**STRATUS**



760  
**HUMILIS**



770  
**ARCUS**



798  
**CIRRUS**

## TECHNICAL SPECIFICATIONS

Country of Origin	Australia	Pile Weight	542g/m <sup>2</sup>
Description	Patterned Textured Loop Pile Carpet Tile	Backing Structure	Enviro Bac®
Colours	6 Standard	Tile Size	500mm x 500mm
Yarn	100% Statron Plus Solution Dyed Nylon	Available Options†	250mm x 1000mm Skinny Plank Enviro Bac Plus® - Cushion Backed Glueless Installation Method: FlexLok
Gauge	50.5/10cm (5/64th Gauge)	Installation Method	1/4 Turn, Brick or Ashlar
Product Thickness	5mm (+/-1.0mm)		

## PERFORMANCE

Anti-static	AATCC 134 < 3.5kV at 21°C & 20% Relative Humidity
Flammability#	CRF 4.8kW/m <sup>2</sup> (Direct Stick) Smoke Value 231% minutes
Colourfast to Light	6-7 (minimum mandatory performance for ACCS:5)
Light Reflectance Values	Available on Request
Stain Resistance	Stain Warden®
Biocontaminant Control	Bioshield® Antimicrobial Control
ACCS Rating#	Contract Extra Heavy Duty & Stairs #19074
Warranty*	15 Year

## SUSTAINABILITY

PVC Minimisation	PVC Free
Indoor Air Quality#	Green Building Council Compliant for VOC Emission Rate Limits
Product Stewardship	This product is Recyclable and Qualifies for Takeback at the End of Life under the Godfrey Hirst Product Stewardship Program
Green Star	Environmental Certification Scheme (ECS) Level 4 Maximum points - Certification #19074
Accreditation	Manufactured under a quality, environmental and health and safety system certified and complying with ISO9001, ISO14001 and AS4801 by an accredited certification body.



\*Test results are available on request.

Specifications and colourations are subject to manufacturing tolerances. As part of the GH Commercial continuous improvement program, GH Commercial reserves the right to change the specifications of or delete colours of this product without notice.

All GH Commercial carpets must be installed in accordance with the latest AS2455 (Parts 1 & 2) and the GH Commercial Carpet Tile / Plank Installation Instructions.

While all care is taken, product images may vary in colour due to possible printing process variations. Images do not seek to duplicate the exact visual appearance, but serve merely as a guide or point of reference.

†Minimum order quantity may apply. Contact your GH Commercial Account Manager for information.

\*This warranty is in addition to any rights consumers may have under Australian consumer laws. Terms and conditions apply - for full information in respect to the scope of the warranty please contact your GH Commercial Account Manager or our Head Office.




1300 444 778  
ghcommercial.com