

LANDSCAPE

STANDARD COLOURS

CARPET TILES & PLANKS



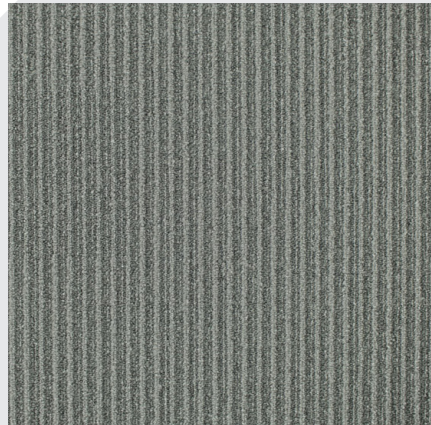
180
DARK EARTH



580
STONE



590
TAUPE



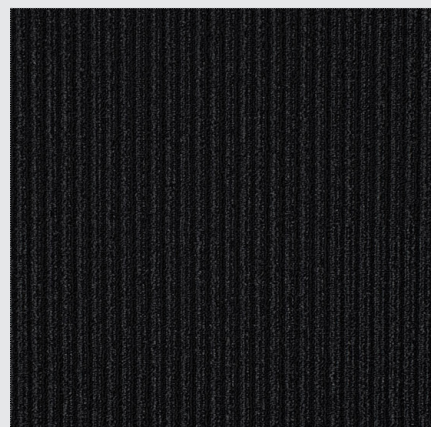
750
STEEL



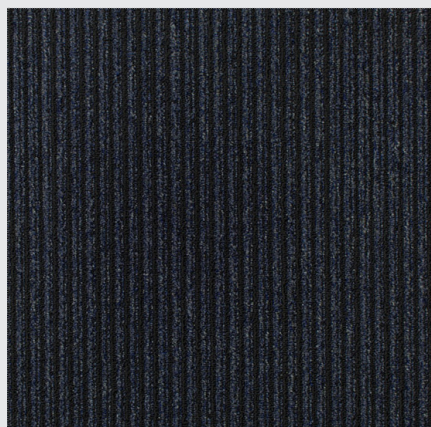
770
METEOR



780
NIGHT SPELL



790
OBSIDIAN



890
MIDNIGHT

Swatch colours are for guide purposes only.

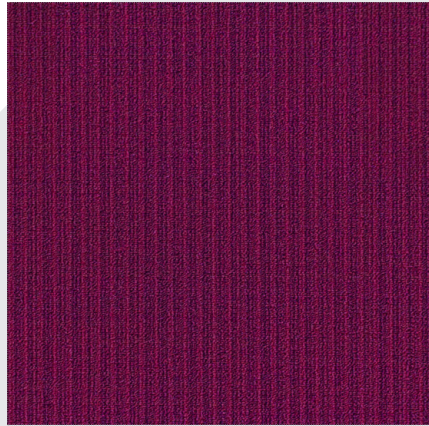
LANDSCAPE

■
HIGHLIGHT COLOURS

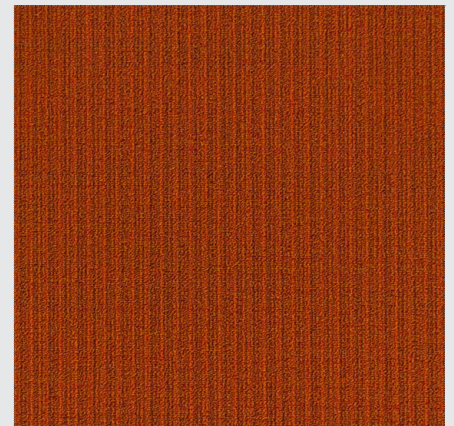
CARPET TILES & PLANKS



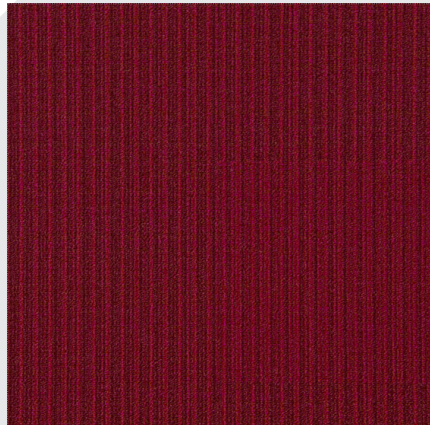
3800
SUNSHINE



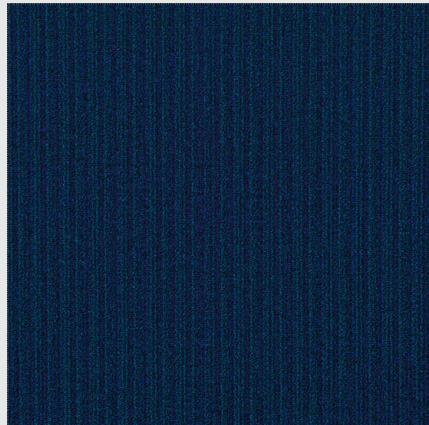
4900
GERISE



6600
ORANGE FIZZ



6800
DEEP PASSION



8700
DEEP SEA



9600
PEPPERMINT

Technical Specifications

Country of Origin	Australia
Description	Loop Pile Carpet
Colours	8 Standard / 6 Highlight
Yarn	100% Solution Dyed Nylon / 100% BCF Yard Dyed Nylon
Gauge	47.2/10cm (1/12th Gauge)
Product Thickness	7mm (+/- 1.0mm)
Pile Weight	680g/m ² (20oz)
Backing Structure	Enviro Bac® - minimum of 60% recycled content
Tile Size	500mm x 500mm
Availability Options	1000mm x 250mm - Skinny Planks [^] Enviro Bac Plus® - Cushioned Backed Easy Grip™ - Adhesive Free Installation
Installation Method	1/4 Turn - Brick - Ashlar

Performance

Anti-static	AATCC 134 <3.5 Kilovolts at 21°C & 20% Relative Humidity
Flammability [#]	CRF 6.5kW/m ² Smoke Value 345% minutes
Colourfast to Light	6-7
Light Reflectance Values	Available on Request
Stain Resistance	Stain Warden®
Biocontaminant Control	Bioshield® Antimicrobial Control
ACCS Rating [#]	Contract Extra Heavy Duty & Stairs #10252
Guarantee [*]	15 Year

Sustainability

PVC Minimisation	100% PVC Free
Indoor Air Quality [#]	Green Building Council compliant for VOC emission rate limits
Product Stewardship	This product is recyclable and qualifies for take back at the end of life under the Godfrey Hirst Product Stewardship Program
Green Star	Environmental Certification Scheme (ECS) Level 4 Maximum Points - Certificate #10252
Accreditation	Manufactured under a quality, environmental and health and safety system certified and complying with ISO9001, ISO14001 and AS4801 by an accredited certification body.



[#]Test results and certificates are available on request. Specifications and colourations are subject to manufacturing tolerances. As part of Godfrey Hirst's continuous improvement program, Godfrey Hirst reserve the right to change the specifications of or delete colours of this product without notice. All Godfrey Hirst carpets must be installed in accordance with the latest AS2455 (Parts 1 & 2) and the relevant Godfrey Hirst Carpet Tile Installation Instructions. While all care is taken, product images may vary in colour due to possible printing process

variation. Images do not seek to duplicate the exact visual appearance, but serve merely as a guide or point of reference. ^{*}This guarantee is in addition to any rights consumers may have under Australian consumer laws. Terms and conditions apply - for full information in respect to the scope of the guarantee please contact your Godfrey Hirst Account Manager or our Head Office.