

TARASAFE

gerflor.com.au

ULTRA - GEO - DESIGN - STANDARD PUR - SUPER - ULTRA H2O



Gerflor[®]
theflooringgroup

TARASAFE ULTRA



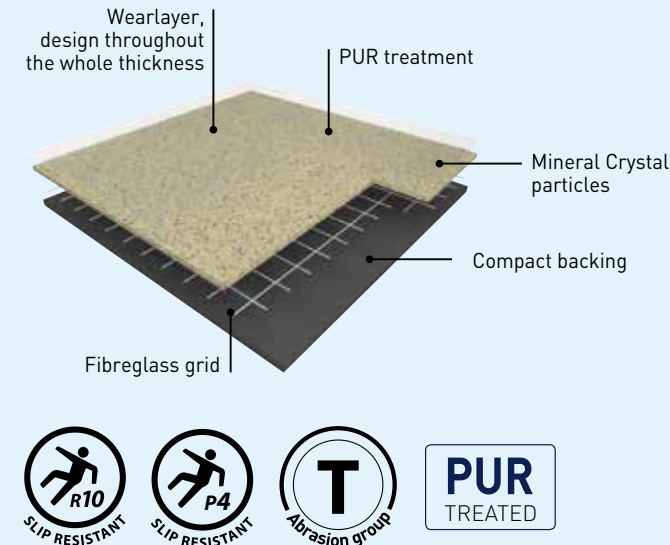
TARASAFE GEO



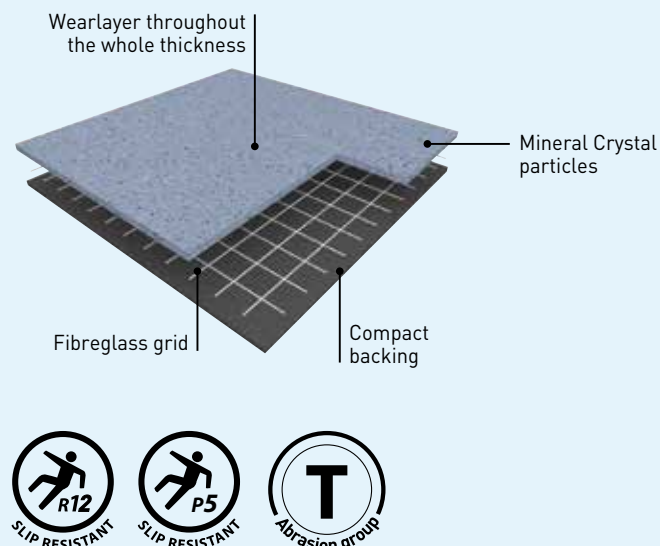
TARASAFE DESIGN



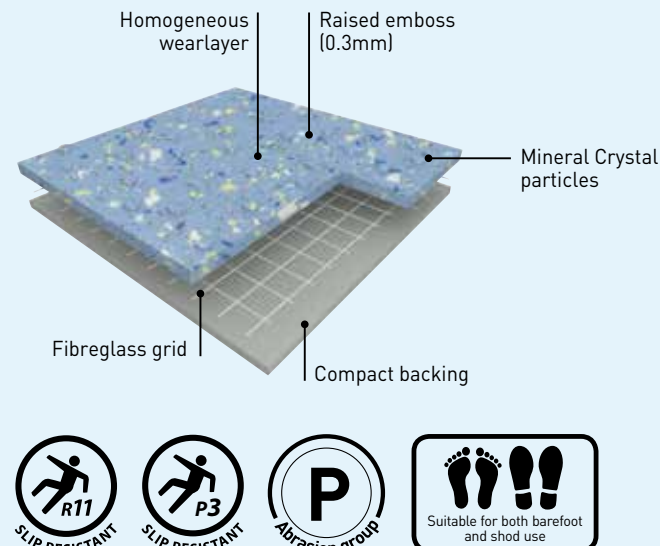
TARASAFE STANDARD PUR



TARASAFE SUPER



TARASAFE ULTRA H2O



TARASAFE SAFETY FLOORINGS

Performances



Non-absorbent, watertight and waterproof



Excellent abrasion resistance



Resistant to high traffic



Resistant to impact, heavy loads, indentation

Installation



Light and easy to handle



Flexible and easy to install



Easier to cut

Maintenance



Low maintenance needed

It is not necessary to seal the floor after installation



Very low maintenance needed

It is not necessary to seal the floor during its lifetime

Eco-responsible solutions



Excellent indoor air quality

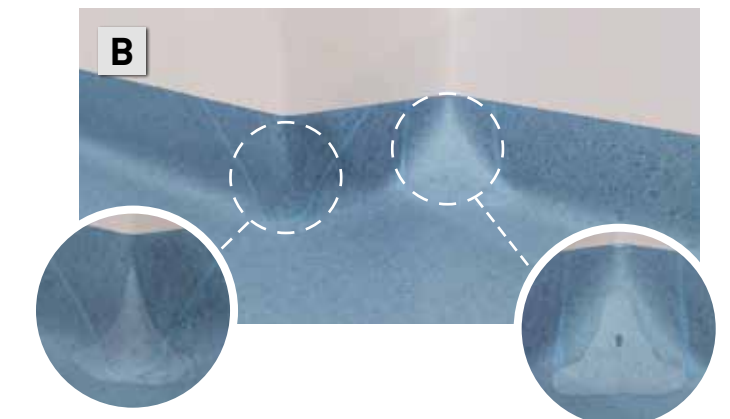


Raw and recycled Materials
100% REACH compliant

An innovative corner system



Gerflor's Clean Corner System is a patent pending, innovative corner solution which is supported by years of research and development (system is only available with Gerflor floors). With ultra-resistant and versatile profiles (picture A) **Clean Corner System** can be used for all your projects with a perfect result (picture B).



- External angle is covered by the respective pending patent applications: WO2016/005695 A1, FR3023313
- Internal angle is covered by the French pending patent application FR3013065

TARASAFE ULTRA H₂O



High performance slip resistant safety flooring for wet and dry, barefoot and shod applications.

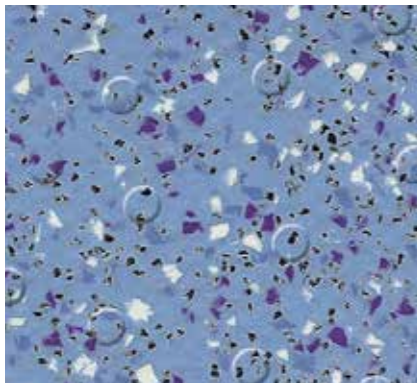


Easier to install, lighter & more flexible to handle

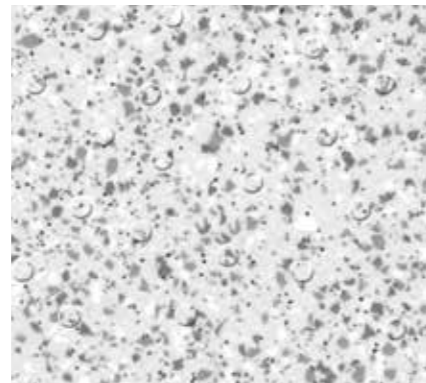
Easier to cut – up to 5 x more blade life

Matte surface finish for an improved design experience

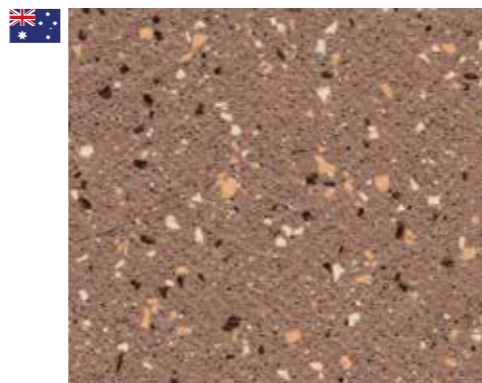
100% recyclable & contains recycled materials



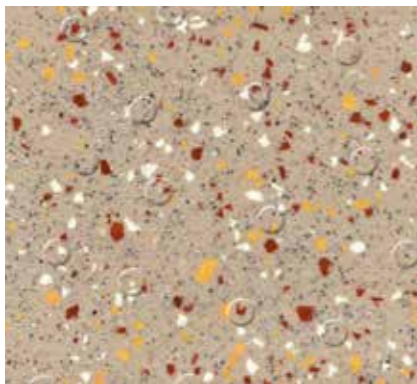
7413 Ocean Blue
NCS: 3030-R90B / LRV: 31.8



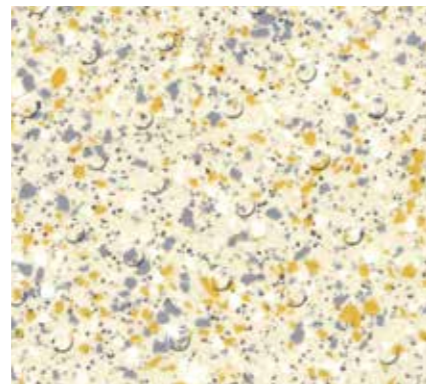
7720 Iceberg
NCS: 1002-B / LRV: 60.6



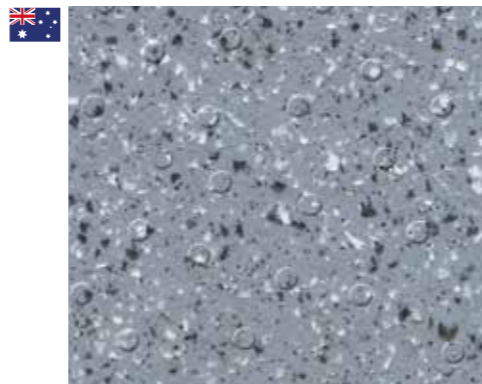
8013 Jasper
NCS: 5010-Y50R / LRV: 23.5



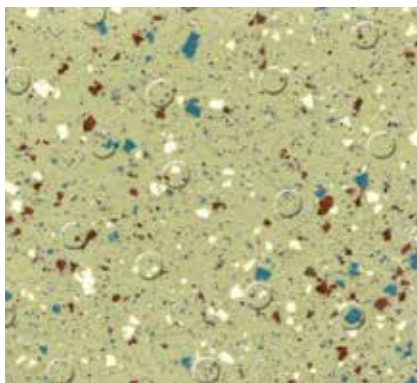
7314 Sand
NCS: 3010-Y10R / LRV: 41.2



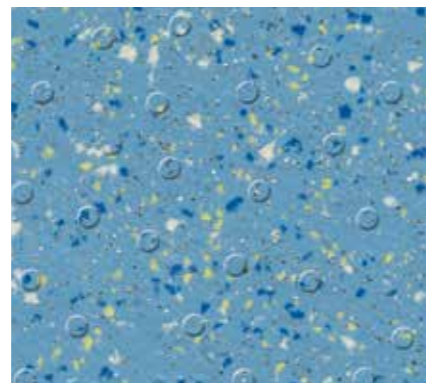
7325 Seashore
NCS: 1005-Y20R / LRV: 63.0



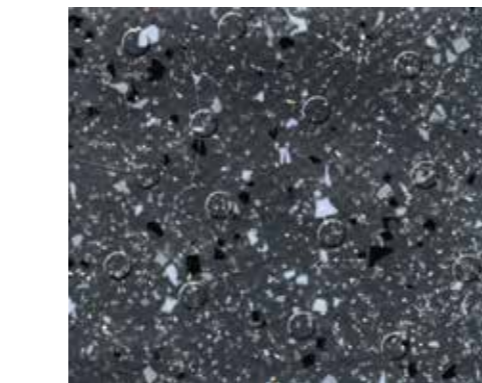
7746 Stone
NCS: 5502-B / LRV: 23.6



7513 Seagrass
NCS: 3030-G60Y / LRV: 36.2

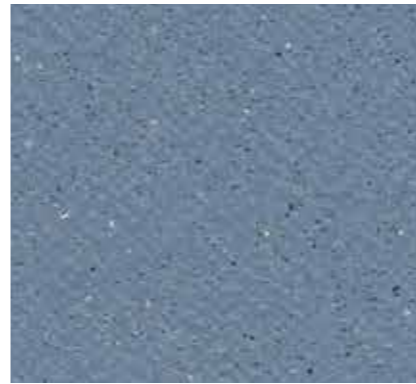


7418 Marine
NCS: 4020-R90B / LRV: 22.8



7732 Gravel
NCS: 7502-B / LRV: 9.7

TARASAFE SUPER



7438 Baleine
NCS: 4020-R90B / LRV: 21.0



Brighter, cleaner surface that adds real sparkle



Matte surface finish for an improved design experience



Easier to install, lighter & more flexible to handle



High resistance to heavy traffic



Easier to cut – up to 5 x more blade life



100% recyclable & contains recycled materials



TARASAFE STANDARD PUR



CRYSTAL INLAY TECHNOLOGY
Brighter, cleaner surface that adds real sparkle

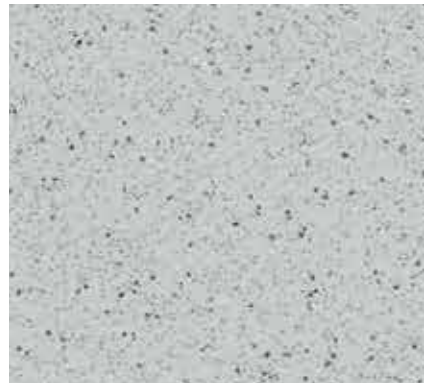
Easier to install, lighter & more flexible to handle

Blade Save
Easier to cut – up to 5 x more blade life

Matte finish
Matte surface finish for an improved design experience

T Abrasion group
High resistance to heavy traffic

100% recyclable
100% recyclable & contains recycled materials



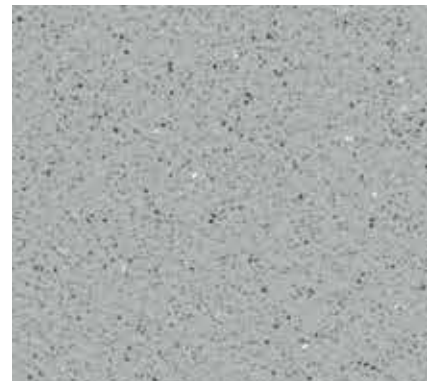
7731 Marbre
NCS: 2002-B / LRV: 51.2



7773 Storm
NCS: 5502-B / LRV: 21.3



7801 Noir
NCS: 9000-N / LRV: 5.7



7767 Dove Grey
NCS: 3502-G / LRV: 34.1



7618 Edelweiss
NCS: 1505-Y10R / LRV: 57.9



7386 Savana
NCS: 2005-Y50R / LRV: 44.3



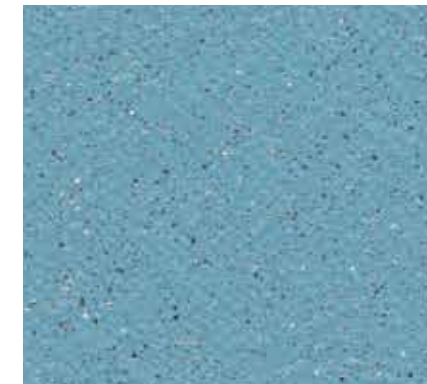
7508 Avocado
NCS: 1510-Y40R / LRV: 32.8



7115 Flame
NCS: 3050-Y70R / LRV: 18.5



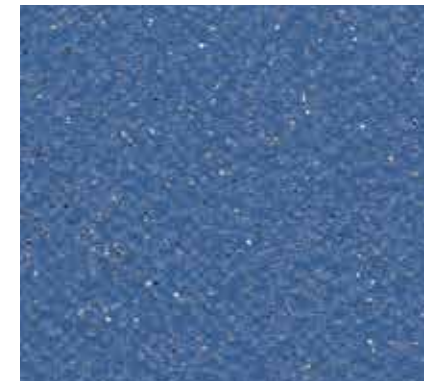
7438 Baleine
NCS: 4020-R90B / LRV: 21.4



7704 Sky Blue
NCS: 2030-B / LRV: 31.6



7302 Sahara
NCS: 3020-Y20R / LRV: 35.1



7709 Royal Blue
NCS: 4040-R80B / LRV: 15.3

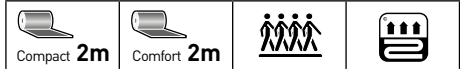


7312 Dune
NCS: 3010-Y30R / LRV: 45.8



7107 Poppy
NCS: 1580-R / LRV: 11.4

TARASAFE ULTRA



Matte surface finish for an improved design experience



High resistance to heavy traffic



100% recyclable & contains recycled materials



Easier to install, lighter & more flexible to handle



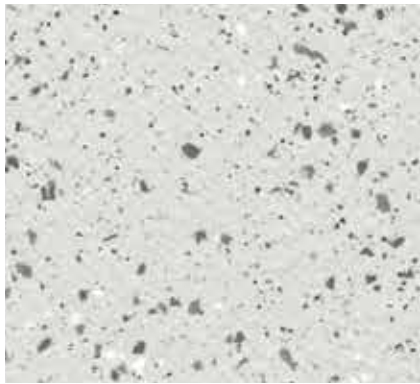
Easier to cut – up to 5 x more blade life



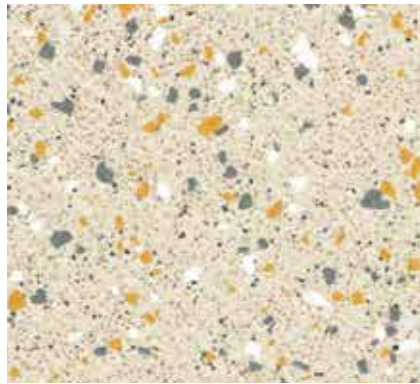
SLIP RESISTANT



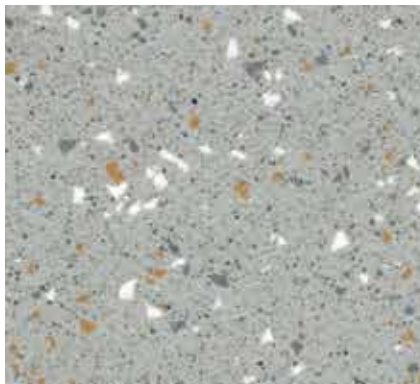
SLIP RESISTANT



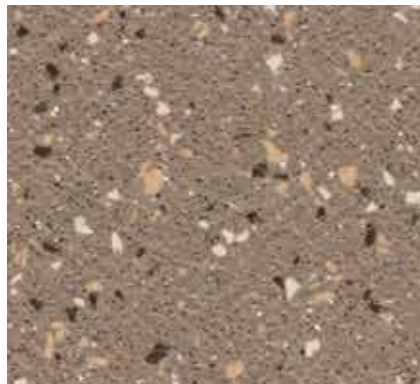
8701 Opal
NCS: 1500-N / LRV: 59.1



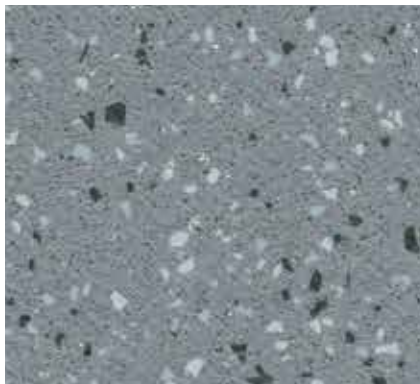
7383 Diopside*
NCS: 1005-Y20R / LRV: 59.6



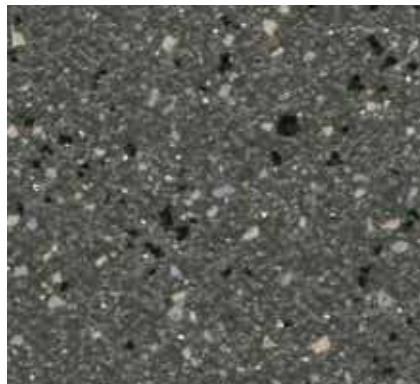
8704 Pebble
NCS: 3000-N / LRV: 44.1



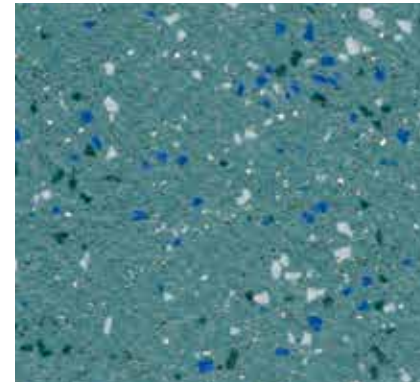
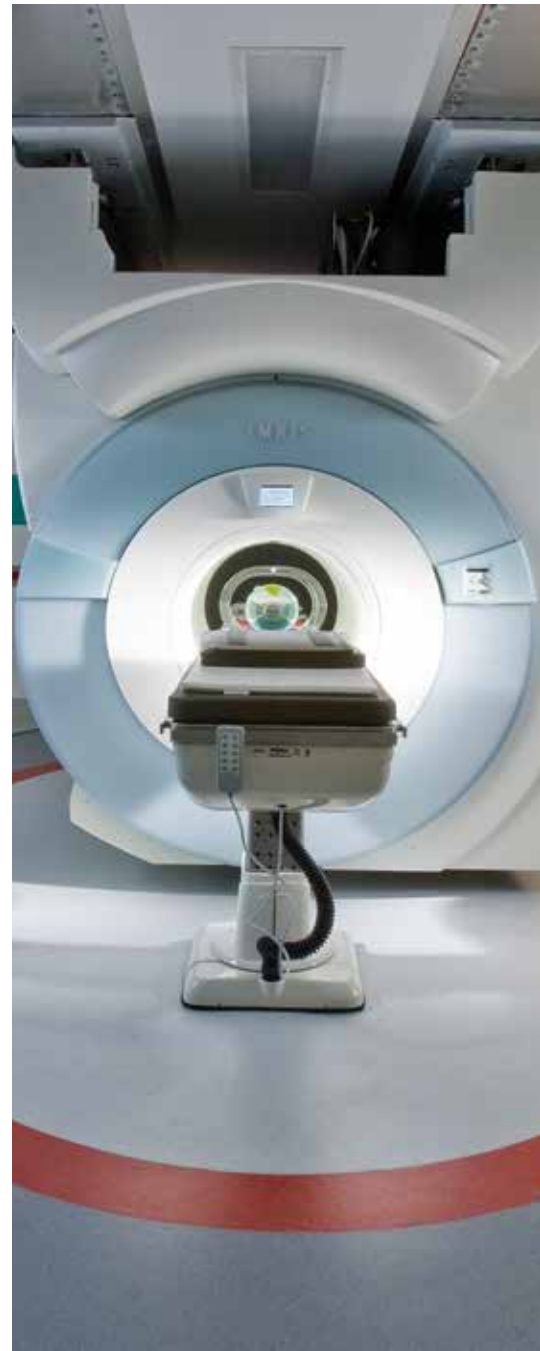
8013 Jasper
NCS: 5010-Y50R / LRV: 23.5



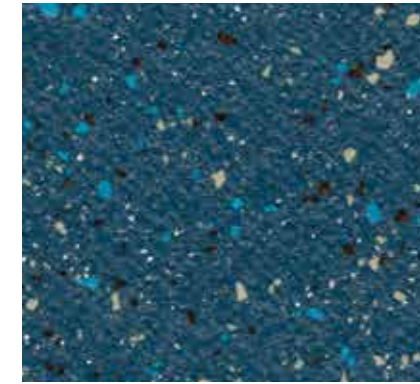
8709 Granite*
NCS: 5502-B / LRV: 25.4



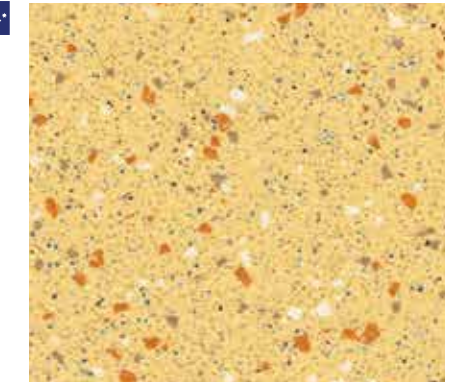
8710 Basalt
NCS: 7502-Y / LRV: 11.9



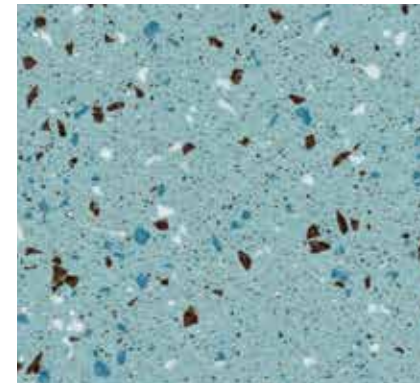
4460 Topaz
NCS: 4020-B30G / LRV: 23.0



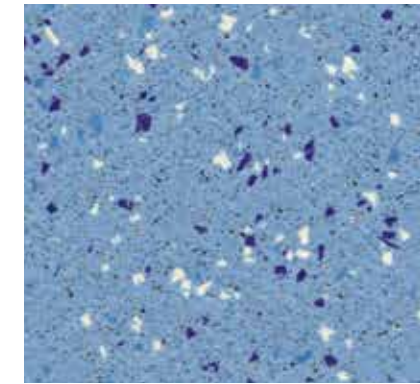
4472 Moonstone
NCS: 6020-R90B / LRV: 12.6



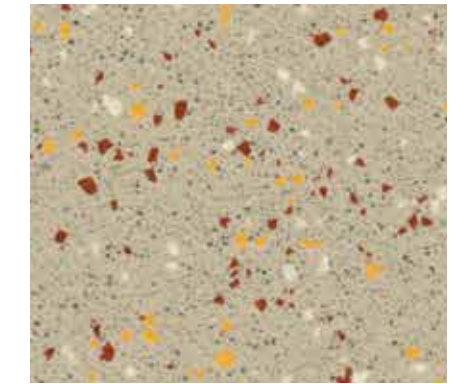
4323 Sandstone
NCS: 1030-Y20R / LRV: 51.5



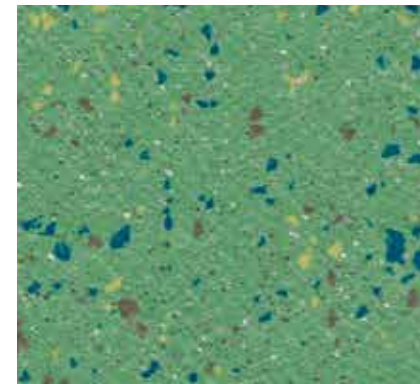
4463 Aqua
NCS: 3010-B30G / LRV: 35.1



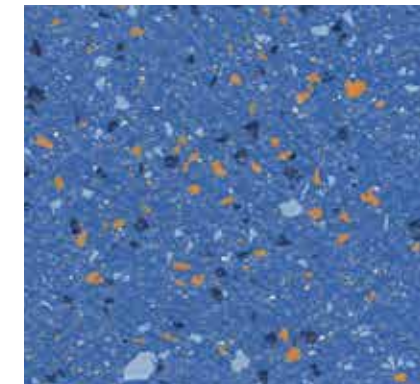
7482 Halite
NCS: 2030-R80B / LRV: 32.5



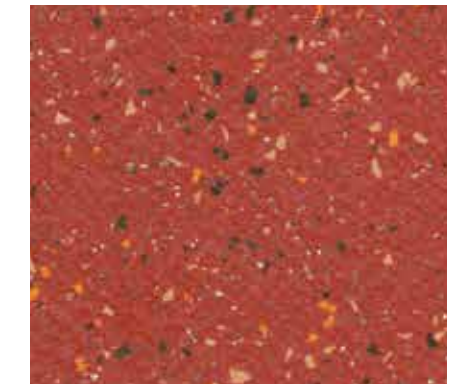
7384 Citrine
NCS: 3010-Y20R / LRV: 40.2



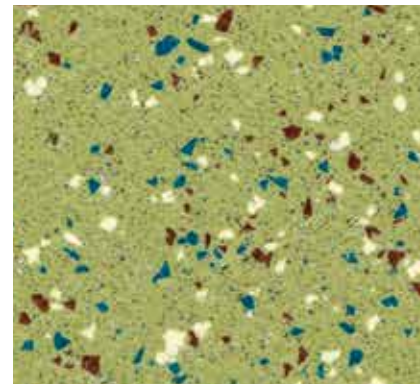
4508 Jade
NCS: 3040-G20Y / LRV: 26.1



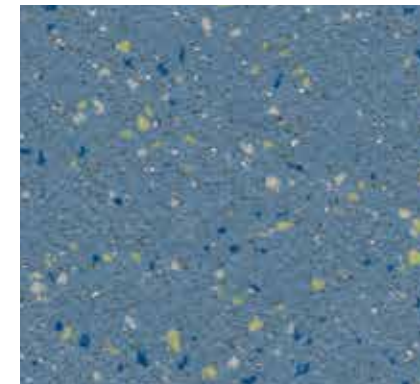
4470 Sapphire
NCS: 3050-R80B / LRV: 17.1



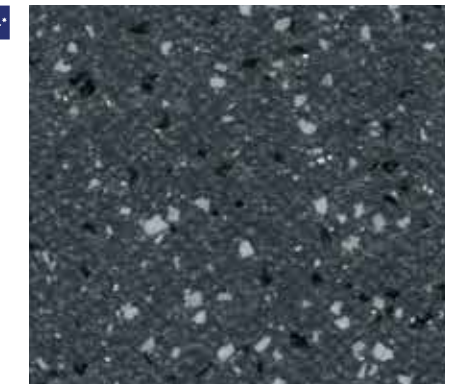
4128 Ruby
NCS: 3560-Y80R / LRV: 13.8



4505 Peridot
NCS: 3030-G70Y / LRV: 35.5



4465 Cobalt
NCS: 3030-R90B / LRV: 23.6



8717 Obsidian
NCS: 7502-B / LRV: 10.1

TARASAFE GEO



CRYSTAL INLAY TECHNOLOGY
Brighter, cleaner surface that adds real sparkle

Easier to install, lighter & more flexible to handle

Blade Save
Easier to cut - up to 5 x more blade life

Matte finish
Matte surface finish for an improved design experience

T
High resistance to heavy traffic

100% recyclable
100% recyclable & contains recycled materials

TARASAFE DESIGN



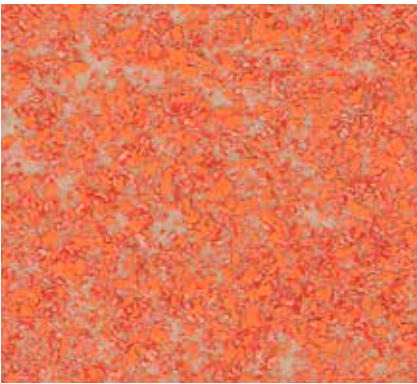
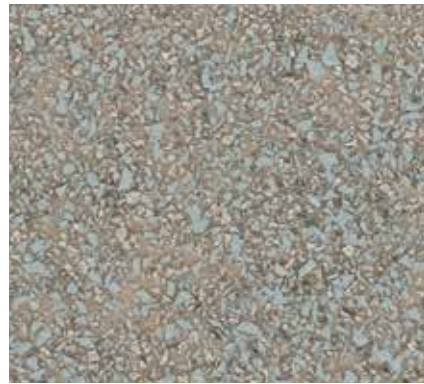
Matte finish
Matte surface finish for an improved design experience

T
High resistance to heavy traffic

100% recyclable
100% recyclable & contains recycled materials

Easier to install, lighter & more flexible to handle

Blade Save
Easier to cut - up to 5 x more blade life

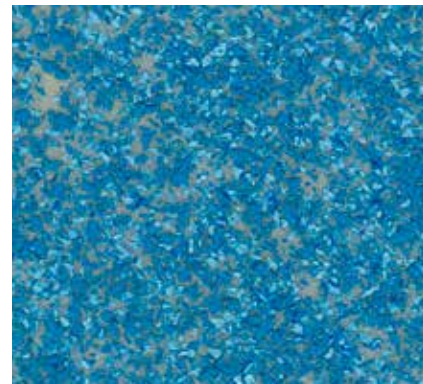


3771 Rock
NCS: 3502-B / LRV: 31.3

3105 Sunspot
NCS: 2050-Y70R / LRV: 25.9

6072 Esterel Clear
NCS: 4010-Y50R / LRV: 31.0

2799 Loftter Grey
NCS: 3502-Y / LRV: 35.6



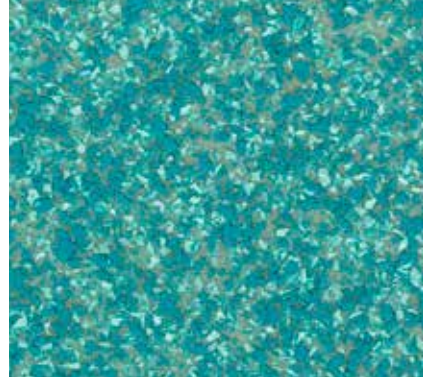
3772 Cliff
NCS: 3005-Y20R / LRV: 42.7

3775 Crystalline
NCS: 3005-R80B / LRV: 38.9

3409 Ocean Wave
NCS: 4030-R90B / LRV: 23.5

6074 Esterel Blossom
NCS: 5005-Y20R / LRV: 28.1

2798 Lorca Natural
NCS: 4502-Y / LRV: 32.0



8081 Trail
NCS: 4010-Y40R / LRV: 33.0

3303 Desert
NCS: 3010-Y30R / LRV: 44.1

3405 Turquoise
NCS: 3030-B30G / LRV: 30.9

6073 Esterel Nut
NCS: 6010-Y30R / LRV: 21.0

5705 Woven Grey
NCS: 5502-G / LRV: 22.9

Tarasafe Ultra	Tarasafe Geo	Tarasafe Design	Tarasafe Standard PUR	Tarasafe Super	Tarasafe Ultra H ₂ O
----------------	--------------	-----------------	-----------------------	----------------	---------------------------------

DESCRIPTION

Total thickness	EN ISO 24346	mm	2.0	2.0	2.0	2.0	2.20	2.0
Thickness of wearlayer	EN ISO 24340	mm	1.16	1.15	0.8	0.85	1.12	1.00
Weight	EN ISO 23997	g/m ²	2460	2370	2435	2460	2880	2400
Width/length of sheet	EN ISO 24341	cm/lm	200/20	200/20	200/20	200/20	200/20	200/20

CLASSIFICATION

Norm/product specification	-	-	EN ISO 10582	EN ISO 10582	EN ISO 10582	EN ISO 10582	EN ISO 10582	EN ISO 10582
European classification	EN ISO 10874	class	34-43	34-43	34-43	34-43	34-43	34-43
Fire rating	AS ISO 9239-1	kW/m ²	8.3	8.0	8.8	8.4	8.7	8.5
		smoke%/min	134	320	206	199	167	112
Static electrical propensity	EN 1815	kV	< 2	< 2	< 2	< 2	< 2	< 2
Slip resistance wet pendulum	AS 4586 2013 (Appendix A)	class	P4	P4	P4	P4	P5	P3
Slip resistance wet/barefoot ramp	AS 4586 2013 (Appendix C)	class	-	-	-	-	-	C
Slip resistance oil-wet ramp	AS 4586 2013 (Appendix D)	class	R10	R10	R10	R10	R12	R11
Surface roughness	-	µm	Rz ≥ 20	Rz ≥ 20	Rz ≥ 20	Rz ≥ 20	Rz ≥ 20	Rz > 20

PERFORMANCE

Abrasion resistance	EN 660.2	mm ³	≤ 2	≤ 2	≤ 2	≤ 2	≤ 2	≤ 4
Abrasion group	-	group	T	T	T	T	T	P
Dimensional stability	EN ISO 23999	%	≤ 0.40	≤ 0.40	≤ 0.40	≤ 0.40	≤ 0.40	≤ 0.40
Residual indentation	EN ISO 24343-1	mm	≈ 0.03	≈ 0.03	≈ 0.03	≈ 0.05	≤ 0.10	≤ 0.10
Castor chair test (type W)	ISO 4918	-	Good	Good	Good	Good	Good	Good
Thermal conductivity	EN ISO 10456	W/(m.K)	0.25	0.25	0.25	0.25	0.25	0.25
Colour fastness	EN 20 105-B02	degree	≥ 6	≥ 6	≥ 6	≥ 6	≥ 6	≥ 6
Surface treatment	-	-	SparClean®	SparClean®	SparClean®	PUR	-	-
Chemical products fastness	EN ISO 26987	-	Good	Good	Good	Good	Good	Good
Anti-bacterial activity MRSA ⁽¹⁾	ISO 22196	-	Good > 99% Inhibits growth	Good > 99% Inhibits growth	Good > 99% Inhibits growth	Good > 99% Inhibits growth	Good > 99% Inhibits growth	Good > 99% Inhibits growth

ENVIRONMENT / INDOOR AIR QUALITY

TVOC	-	mg/m ² /hr [24 hours]	0.188	0.188	0.174	0.215	0.266	0.266
Certification	-	-	Floorscore®	Floorscore®	Floorscore®	Floorscore®	Floorscore®	Floorscore®

(1) The implementation of an effective cleaning method is the best defence against infection.

ADHESIVES: Please refer to Gerflor Installation guidelines on gerflor.com.au

INSTALLATION

Laying is the responsibility of the installer. Installation should be made in accordance with installation guidelines supplied and regularly updated by Gerflor's Technical Department. Installation should be carried out in accordance with local standards. Subfloor to be smooth, hard, clean and dry prior to laying. Where applicable the subfloor must incorporate an effective Damp Proof Membrane. The material must be allowed to acclimatise 24 hours prior to installation in a room temperature of between 18-24°C. All seams must be heat welded using Gerflor matching weld rod.



Manufactured using recycled card.
A sampling service is available for your convenience - 1800 060 785

GERFLOR AUSTRALASIA PTY LTD
Tel: +613 9832 1333 - Fax: +613 9832 1395
Email: custorders@gerflor.com.au



IMPORTANT: Gerflor has a policy of continuous product and product data improvement. It reserves the right to change design and specifications without notice.

MAINTENANCE

Maintenance should be carried out regularly to retain the appearance and durability of the floor. The floor covering should be maintained with regular sweeping and damp mopping using a neutral cleaner, or auto scrubber machine with an appropriate pad.

Rubber leaves indelible stains on vinyl floorings: do not use mats with rubber backing and replace tubular furniture feet with those made of PVC or polyamide. Place mats of sufficient length at entrances to reduce outside sources of dirt.

Further installation and maintenance instructions are available from www.gerflor.com.au