

# BUILDING FLOOR COVERINGS

## LAYING OF ATTRACTION® TILES SUBJECT TO TECHNICAL REPORT U4 P3/4 E1/2 C2

Tiles are all laid in the same direction.



Min. ambient temperature: 10 °C



Min. surface temperature: 10 °C

Before laying the floor covering, it should be inspected, so as to detect any visual defects. In the event of any visual defects, please notify GERFLOR and do not start laying the product before receiving GERFLOR's approval.

### 1. AREAS OF APPLICATION

#### 1- LAYING TYPE

#### FOREWORD: CONDITIONS FOR USE

	P RATING FOR NEW AND REFURBISHED PREMISES	LAYING METHOD WITH TEMPERATURE CONDITIONS	PERIPHERAL EXPANSION
ATTRACTION®	U4P4 P3 premises, also capable of withstanding heavy traffic within the limits specified below. Floor care is limited to the use of a self-propelled floor scrubbing machine.	Since the stores are air-conditioned, the floor covering is not subject to temperature deviations greater than 20 °C. The dimensional stability of Attraction® tiles enables loose laying subject to a 500m² limit.	Due to the year-round heat regulation in the buildings, Gerflor recommends allowing for a 0.5 cm peripheral clearance.

DYNAMIC LOAD RESISTANCE			
Traffic frequency and type	Load according to tyre or wheel type		
	Polyurethane or equivalent hardness	"Solid rubber or pneumatic tyre. This type of machine should not be left on the tiles when idle, so as to prevent dye migration. It should only be used for restocking shelves."	
ATTRACTION® Routine frequency, typically store stocking and cleaning	<b>Total load per wheel</b>		Electrically or thermally powered handling machinery is liable to give rise to heating-related damage due to wheel skidding. It is advisable to ensure that equipment is suitable for the floor covering structure (e.g.: machinery equipped with an anti-skid system)  Paired wheels are counted as a single wheel when the distance between them (centre distance or track) is < 20 cm.  Metal wheels are excluded.
	< 600 kg	< 1,000 kg	
	<b>Contact pressure</b>		
	< 40 kg	not applicable	
	<b>Total loaded weight</b>		
	< 1,800 kg	< 3,000 kg	
	<b>Speed</b>		
	< 5 km/h	< 10 km/h	
<b>Handling</b>			
Hand-operated truck, manual or electric pallet truck with on-board operator, nominal capacity 1,300 kg	Traction truck		
<b>Cleaning</b>			
Self-propelled automatic scrubbing machine with on-board operator			

STATIC LOAD RESISTANCE			
	MAXIMUM LOAD PRESSURE	HANDLING MACHINERY EQUIVALENCE	
ATTRACTION®	< 40 kg / cm²	< 500 kg / Wheel or per support	

# LAYING OF ATTRACTION® TILES SUBJECT TO TECHNICAL REPORT U4 P3/4 E1/2 C2

Before laying the floor covering, it should be inspected, so as to detect any visual defects.

In the event of any visual defects, please notify GERFLOR and do not start laying the product before receiving GERFLOR's approval.

## 1.1 - Type of premises and use

This floor covering is intended to be laid in retail areas and ancillary areas (stores, back office, food aisle fixtures, etc.), excluding wet areas (showers, etc.).

It is intended for temperature-regulated premises (store, retail area, etc.).

SURFACE EVENNESS / MOISTURE CONTENT CORRELATION CHART			
		Surface evenness	
		< 10 mm	< 10 mm
Moisture content	< 4.5%	direct laying	conventional levelling
	4.5 to 7%	direct laying	specific levelling
	7 to 10%	direct laying	unspecified case
	> 10%	unspecified case	unspecified case

## 2 - SURFACES

### 2.1 - Preparatory work for new flooring

#### MECHANICAL PREPARATION:

The surfaces should be prepared with care so as to remove any soiling, laitance, treatment products or any other foreign body.

#### BUMP AND DEPRESSION TREATMENT:

Sanding of bumps.

Cleaning: using industrial vacuum cleaner.

Point levelling of depressions with P4S or P4SR floor sealer.

#### CRACK TREATMENT:

On any surface, cracks should be detected beforehand.

They are not treated, if they are flush, and if they are < 3 mm wide.

#### JOINT TREATMENT:

Contraction joint: If they have an opening < 4 mm, they are not treated.

Expansion joint: Following thorough cleaning, expansion joints are preserved: end profiles with or without an overlay are arranged on either side of the joint.

Construction joint: Similar to cracks, if they have an opening < 3 mm, they are not treated.

#### LOCALISED LEVELLING:

Surface levelling may be required, particularly where the surface is not sufficiently even or in poor condition.

#### Required characteristics on dry surface (moisture content < 4.5%):

The sealer performances should meet P4S or P4SR rating specifications.

**Required characteristics on wet surface (moisture content between 4.5 and 7%):** We recommend the use of outdoor floor sealers (consult sealer manufacturers).

### 2.2 - Refurbished surfaces - List of surfaces

	PLASTIC FLOOR COVERINGS		RESIN		TILING		CARPET
	Surface evenness < 10 mm	Surface evenness < 10 mm	Surface evenness < 10 mm	Surface evenness < 10 mm	Surface evenness < 10 mm	Surface evenness < 10 mm	
Retention of existing floor covering % damaged surface area < 10%	direct laying	point levelling	direct laying	sanded epoxy resin grout to restore surface evenness	direct laying with joint treatment in the case of pronounced joints	treatment of tiling with primer and dressing sealer	removal
Removal of existing floor covering % damaged surface area > 10%	direct laying on stripped surface for surface evenness	removal see new concrete + concrete treatment	direct laying on stripped surface	removal see new concrete + concrete treatment for surface evenness	direct laying on stripped surface	removal see new concrete + concrete treatment for surface evenness	

Laying on bituminous coatings can be envisaged if the surface evenness is < 10 mm under the 2 m rule. Beyond this, bumps need to be planed using suitable means. We do not recommend the use of shrink-free resin.

#### SPECIAL CASE: UNDER-FLOOR HEATING

Laying on radiant under-floor heating (UFH) systems is authorised on surfaces with a surface evenness < 7 mm / 2 m. However, in this case, the tiles must be completely bonded on the entire surface.

Laying on conventional under-floor storage heating is possible (see section 5.4 of the NF P 62-203-1 (DTU 53.2) standard).

However, in this case, the tiles must be completely bonded on the entire surface.

# BUILDING FLOOR COVERINGS

## LAYING OF ATTRACTION® TILES SUBJECT TO TECHNICAL REPORT U4 P3/4 E1/2 C2

### 2. LAYING

#### ■ 2.1 - STORAGE & WORK CONDITIONS

Before laying the floor covering, it should be inspected, so as to detect any visual defects. In the event of any visual defects, please notify GERFLOR and do not start laying the product before receiving GERFLOR's approval.



Ambient temperature  
Min: 10 °C



Laying on extra-long  
double sided adhesive  
every 500 m<sup>2</sup>

Since the stores are air-conditioned, these tiles are not subject to temperature deviations greater than 20 °C. The tiles should be stored on-site for 24 to 48 hours beforehand at ambient temperature.

 DO NOT MIX BATCHES

#### ■ 2.2- LAYING TYPE

Attraction® / GTI / GTI Max tiles can be bonded as per DTU 53.2, but they are essentially intended for loose (non-adhesive) laying, in single pieces limited to 500 m<sup>2</sup>. For larger surface areas, the surface is split into 500 m<sup>2</sup> sections and the joints between areas are sealed with adhesive.

#### ■ 2.3 -DETAILED LAYING

##### 2.3.1 Extra-wide double-sided adhesive positioning

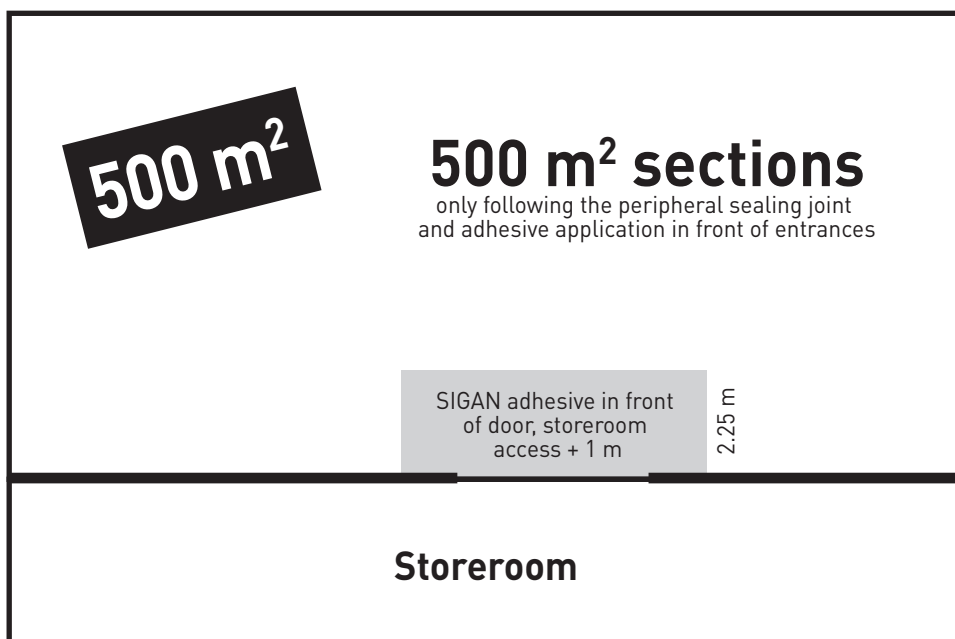
###### Splitting of surfaces into 500 m<sup>2</sup> sections

Since loose laying is limited to 500 m<sup>2</sup>, it is necessary to envisage splitting into 500m<sup>2</sup> sections by previously applying an extra-wide double-sided adhesive.

Regardless of the configuration, SIGAN double-sided adhesive should be applied, never exceeding more than **20 rows** of tiles.

Study the layout so as to prevent the position of the double-sided adhesive and the seam between each area from being situated in the main aisles to avoid heavy traffic.

- Example of configuration < 500 m<sup>2</sup> (clothing, cosmetics aisles, etc.),



Each 500m<sup>2</sup> section may include turning or liquid areas, storeroom entrances, also requiring double-sided adhesive application.

Avoid locating 500 m<sup>2</sup> demarcation areas in a main aisle.

# LAYING OF ATTRACTION® TILES SUBJECT TO TECHNICAL REPORT U4 P3/4 E1/2 C2

## 2.3.2 Sigán double-sided adhesive application

SURFACE	PRIMER	ADHESIVE TYPE	AREA COVERED PER ROLL
Water-bound Dryness ratio < 4.5% moisture	PLANUS Only under adhesive	Sigán 1 or Acrylic adhesive	- One 75 cm x 25 m roll - One 5 cm x 25 m roll suitable for use in specific areas in front of doors or other areas which are difficult to access.  i.e. 20 m <sup>2</sup>
Water-bound: Dryness ratio > 4.5% moisture	UZIN EPOXY PE 480 on entire surface Or Two-part adhesive	Sigán 1 or Acrylic adhesive	
Tiling	NONE	Sigán 3	
Resin, Old PVC covering	NONE	Sigán 2	
Vinyl Asbestos tile	NONE	Sigán 2	

### • Note on surface:

The surface should be dry, hard, perfectly adherent, load-bearing, plane and free from grease, dust and silicone.

**Bay windows:** In front of bay windows, apply Uzin Sigán (ref according to surface) extra-wide (0.75 m) double-sided adhesive.

SIGAN 1 + PLANUS primer or PE 480	Water-bound surface
SIGAN 2	Resin / PVC flooring / Vinyl Asbestos
SIGAN 3	Tiling

### • If applying primer:

- Apply evenly on the surface at a consumption rate of 70 to not more than 100 g/m<sup>2</sup>, with a foam roller, in crisscross strokes.
- Avoid any splash/drip/streak formation.
- Leave to dry for at least 2 hours, with the room well-ventilated. UZIN Planus or Epoxy PE 480 primer should be perfectly dry. The drying time depends on the surface, weather conditions and ventilation.

Tiles should not rest on the Primer.

### Do not use any other primer!



- Bonding test: Apply Sigán 1 generously on the surface. If Sigán 1 adhesive becomes detached from the surface, apply another coat of Primer.

### • 750 mm Sigán dry adhesive application:

- Unroll the Sigán adhesive, pressing lightly on the adhesive with a gluing block.

**Important:** The strongly adhesive (protected) side must never rest on the surface!



- Only unroll the amount of Sigán that can be covered that day with the floor covering.
- Roll up the remaining Sigán with the protective paper (to protect the surface and the section from dust).

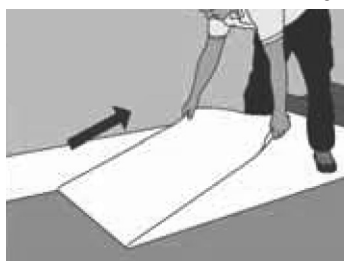
### • Laying PVC tiles on adhesive:

- Mark the lines on the protective paper either with a chalk line or a pencil.

- Mark the starting point of the first tiles and the first row of tiles.
- Place a steel rule along the line and cut only the protective paper with a straight blade.
- Remove the protective paper from the Sigán adhesive, pulling straight and flat. The line created forms the starting line of the first tiles of the first row.
- Lay the tiles and interlock them.
- Stack the protective papers as you progress and then roll them up (minimises waste volume).
- Remove the protective paper as you progress, pulling straight and flat.
- If laying is discontinued, the protective paper may be put back in place to protect the Sigán adhesive.
- After laying, apply adhesive generously/apply a pasting roll, in crisscross strokes on the entire surface.

### • Removing tiles and Sigán:

**Sigán allows you to remove the floor covering without leaving any trace of adhesive and without damaging the surface.**



- Disengage the tiles.
- Starting in one corner, detach the Sigán from the surface.
- Remove the floor covering and Sigán adhesive by pulling at ground level.

## 2.3.3 Laying Attraction® / GTI / GTI Max tiles

### • Precautions

**1- The tiles are supplied on pallets. Different batches must not be mixed together.**

**2- Laying direction:** Tiles are ALL laid in the same direction. Observe the direction indicated by the area on the back of the tile.

**3- Pressed materials, such as GTI, GTI Max and ATTRACTION® tiles, may have dimensional tolerances between series or colours liable to vary by 1 mm. In this case, the tiles may:**

#### - No longer be suitable for interlocking

In this case, envisage cutting dovetails and sealing the tiles after previously applying 5 cm wide double-sided adhesive on either side of the seam.

#### - Or interlock very easily

In this case, envisage also applying a 5 cm wide SIGAN double-sided adhesive on either side to prevent any risk of disengagement over time.

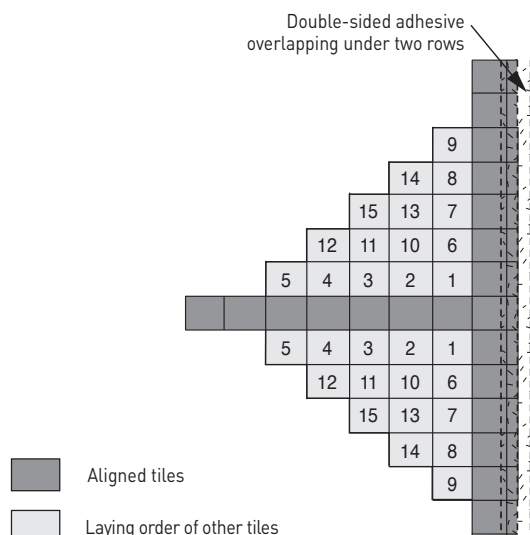
### • Layout

- Lay out the axes for a 500 m<sup>2</sup> surface.

# BUILDING FLOOR COVERINGS

## LAYING OF ATTRACTION® TILES SUBJECT TO TECHNICAL REPORT U4 P3/4 E1/2 C2

- Lay in steps for easier tile interlocking and to prevent displacement. The tiles are laid in step and **ALL** in the same direction (see arrows on back of tiles).



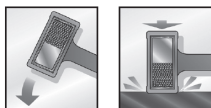
### • Interlocking of tiles (procedure, tools, etc.), adjustment

- The tiles are interlocked by striking with a synthetic mallet or a non-rebound mallet and a wooden block.
- The tiles are interlocked from the corner to the edge.

Tools required: Cutter - Tape measure - Metal rule - Metal tracing wheel - Wooden or synthetic resin mallet



Non-rebound mallet



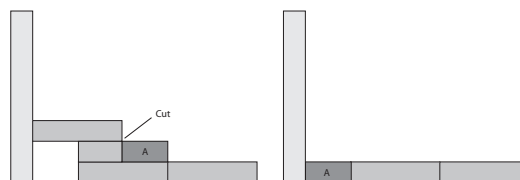
	GERFLOR	JANSER	ROMUS	WOLFF
Non-rebound mallet	0508 0001	Referencing in progress	Referencing in progress	Referencing in progress

### • Peripheral levelling

The tiles should be positioned such that the peripheral cuts are  $> \frac{1}{2}$  tile

#### Cutting (procedure, tools, etc.)

- Peripheral clearance: in standard sections, the peripheral clearance is 0.5 cm.
- Provide a circular saw with platform for the duration of the work.
- Cutting is performed either with a cutter (1 pass on the surface and repeat on back), or using the transfer technique (scribing)  
*Scribing:* Method for tracing or cutting parallel lines. For this, a marking gauge or a tile gauge is used.
- Position the tile to be cut on the last full tile laid.
- Take a full tile which will serve as a gauge.
- Lay it on the tile to be cut, pressing on the partition (wall). Leave a clearance of 0.5 cm.
- Mark the tile to be cut along the edge of the gauge, with a cutter equipped with a straight blade.
- Cut the part of the tile to be laid neatly and put it in place.



- For difficult areas (door frame, etc.), use demultiplied shears.



#### Mitre shears

Reference: Gerflor: 0566 0001 / Janser: 237 530 000  
For cutting around door frame bases, areas which are difficult to access.  
Available from Gerflor.



#### Demultiplied mitre shears

Reference: Janser: 262 284 000  
For cutting around door frame bases, areas which are difficult to access.

## 3. HANDLING SPECIAL SECTIONS

### ■ 3.1 - SKIRTING

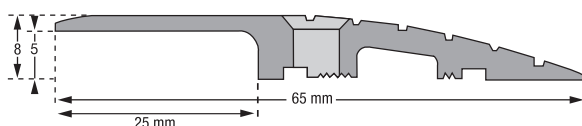
VYNAFLEX skirting or Gerflor Flexible skirting for finishing between floor and wall.

### ■ 3.2 - SURFACE EXPANSION JOINTS

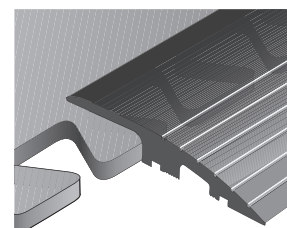
- Flush joints: The RM 20-5 profile with PVC strips supplied by COUVRANEUF covers the joint. Adhesive-free tiles are cut along the joint and should be sealed onto the flexible joint.
- Joints with overlay profile: The profile is fitted over the floor covering and is secured on one side only.

### ■ 3.3 - DOOR PASSAGES AND STOPS

Use the following profiles according to the conditions of use: intensity of traffic, humidity level, etc.



H205 finishing profile



# LAYING OF ATTRACTION® TILES SUBJECT TO TECHNICAL REPORT U4 P3/4 E1/2 C2

## 3 m long profile with 10 x 4.3 mm diameter drilled holes

The centre distance between the holes is 300 mm

The first hole is 150 mm from the end

The holes are deburred after drilling

## TFZ 4x50 mm screw and 6x30 mm dowel for RMP4 / 5, 6, 12.5 and 15 mm

TFZ screw, diameter 4 mm and length 50 mm



Dowel, diameter 6 mm and length 30 mm



## 3.4 - CUTTING AROUND DOOR FRAME BASES AND SPECIAL SECTIONS



For cutting around door frame bases, areas which are difficult to access  
Available from Gerflor



For cutting around door frame bases, areas which are difficult to access

Mitre shears

Reference: Gerflor: 0566 0001 /

Janser: 237 530 000

Demultiplied mitre shears

Reference: Janser: 262 284 000

## 3.5 - SEALANT APPLICATION IN PERIPHERAL CLEARANCE

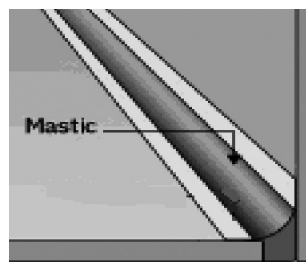
We recommend applying a polyurethane or hybrid sealant (M.S. Polymer) in the peripheral clearance to prevent any water or other penetration.

## 3.6 - CONNECTION TO ADJACENT FLOOR COVERINGS

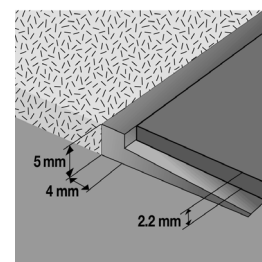
Depending on the type of floor covering adjacent to the ATTRACTION® tile, use the suitable profile in the Gerflor range.

## 3.7 - JOIN BETWEEN DIFFERENT COLOURED TILES

The tiles are joined by interlocking the different coloured tiles (most reliable solution) or by means of straight or rounded cutting and sealing (most visually appealing solution).



Peripheral clearance, profile overlay.



P1509 connection profile  
Ref. 0496

## 4. PUTTING FIXTURES BACK IN PLACE

- Consoles (whether stocked or not) and other display units should be put back in place before the distribution plates to prevent slippage of the loose laid material.

- Any damage to the material caused by putting fixtures back into place shall not be accepted by the installer or material manufacturer.

## 5. REPAIRS AND MAINTENANCE

### 5.1. - MONITORING, MAINTENANCE AND REPAIRS

The user should regularly monitor that the structure appears to be securely in place and notify the client and/or original installer of any anomalies that the user deems to incur potential risks in respect of the durability of the structure.

The technical analysis, requested by the user from the other parties, should differentiate between ageing due to normal wear and tear due to the traffic and use of the premises and accidental damage.

If the observations made by the user are found to be justified following the technical analysis, the installer shall conduct the repair work within the scope of its contractual and/or legal commitments.

#### NOTE:

As part of this monitoring, the user should report any accidents linked with the operation of the premises without delay for repairs, in particular: cuts due to falling sharp objects, individual burns, etc. This maintenance may be carried out by the user's maintenance department.

### 5.2. - REPLACING ATTRACTION® / GTI / GTI MAX TILES

- Replacing an adhesive-free tile
  - Cut a corner of the damaged tile
  - Disengage the dovetails
  - Fit a new tile in place, observing the laying direction.
- Replacing an adhesive-bonded tile
  - Cut a corner of the damaged tile
  - Disengage the dovetails
  - Cut and replace the adhesive
  - Fit a new tile in place, observing the laying direction.

