



# HQR

EXCLUSIVE COLLECTION



A COMBINATION OF  
**DESIGN & HIGH TRAFFIC RESISTANCE**

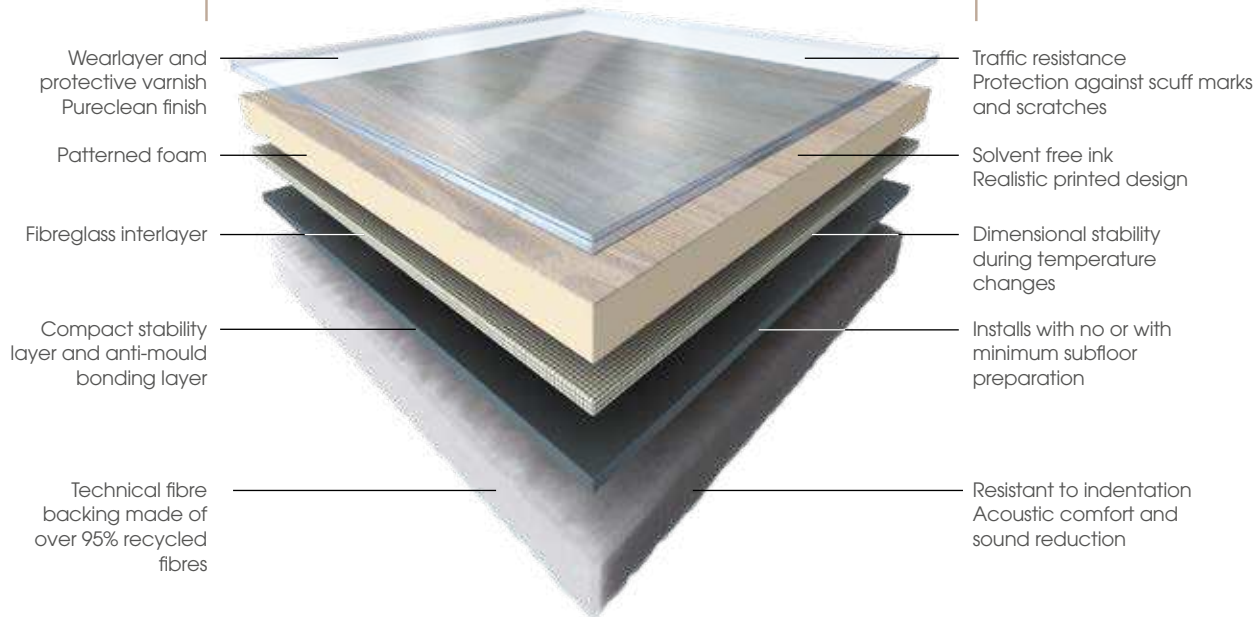
**Gerflor**<sup>®</sup>  
theflooringroup

# FLOOR-COVERING WITH EXCLUSIVE PROPERTIES THANKS TO PATENTED **GERFLOR FIBRE TECHNOLOGY**



## FEATURES

## BENEFITS



## GREEN

- ▶ TVOC < 100 µg/m<sup>3</sup>
- ▶ 95% recycled fibres
- ▶ Laying **without glue**
- ▶ 100% recyclable





## HIGH TRAFFIC

### IDEAL PROPERTIES FOR PROFESSIONAL USE

▶ **IDEAL FOR INTENSIVE/ HIGH TRAFFIC USE:**

As it is 3.10 mm thick and has a 0.50 mm wearlayer.

▶ **MULTI-PURPOSE APPLICATIONS:**

Hardwearing, suitable for domestic and semi commercial use: housing, residences, offices, waiting rooms, independent shops and hotels...

▶ **DURABLE:**

Warranty: 15 years for residential use and 5 years for commercial use.

## HIGH COMFORT

### A COMBINATION OF DIFFERENT MATERIALS PROVIDING A COMBINATION OF BENEFITS

#### 1 EASY TO LAY

▶ **SAVES MONEY AND TIME:**

product ready to lay, no preparation of the floor and no adhesive required

▶ **UNROLL... IT'S DONE!**

GFT takes up the unevenness of the existing floor and can be laid directly

▶ Ideal for refurbishment and rented properties

#### 2 ULTRA COMFORTABLE

▶ **ACOUSTIC INSULATION:** ideal for rooms on upper floors and for apartments

▶ **THERMAL INSULATION:** flooring that never feels cold underfoot

▶ **COMFORTABLE TO WALK ON:** its pliable fibres make it feel springy

#### 3 EASY TO LIVE WITH

▶ **EASY-CLEAN:** hygienic and antiallergenic

Simply rinse with soapy water

▶ **TOTALLY WATERTIGHT:** prevents moisture rising and mould

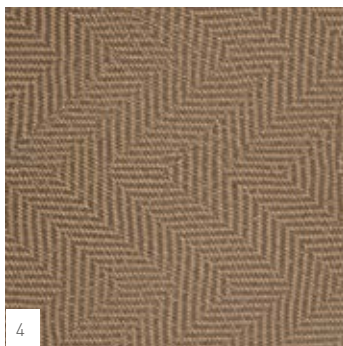
Suitable for wet areas



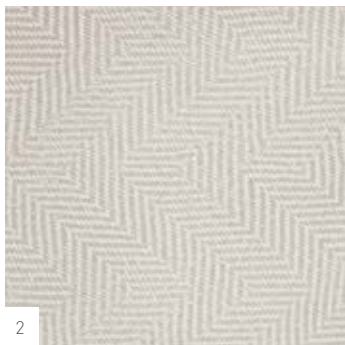
**Sisal**, a new textile design inspired by the popular sisal rugs, woven from natural plant fibers. Like a jute or hemp flooring, its soft and natural color palette will be a lasting addition to any room.



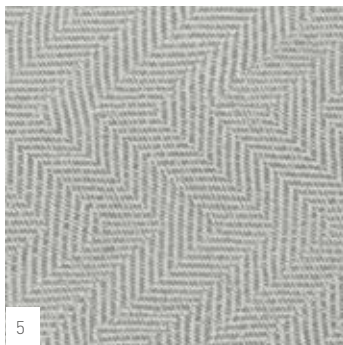
1



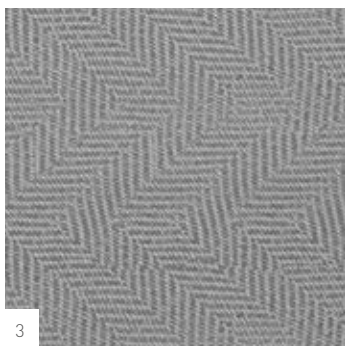
4



2



5



3

#### 1-SISAL BLACK

2 m: Code: 1373 2208 - EAN: 3475710463471

4 m: Code: 1393 2208 - EAN: 3475710461231

#### 2-SISAL CREAM

2 m: Code: 1373 2211 - EAN: 3475710463501

4 m: Code: 1393 2211 - EAN: 3475710461262

#### 3-SISAL GREY

2 m: Code: 1373 2209 - EAN: 3475710463488

4 m: Code: 1393 2209 - EAN: 3475710461248

#### 4-SISAL NATURAL

2 m: Code: 1373 2212 - EAN: 3475710463518

4 m: Code: 1393 2212 - EAN: 3475710461279

#### 5-SISAL SOFT GREY

2 m: Code: 1373 2210 - EAN: 3475710463495

4 m: Code: 1393 2210 - EAN: 3475710461255



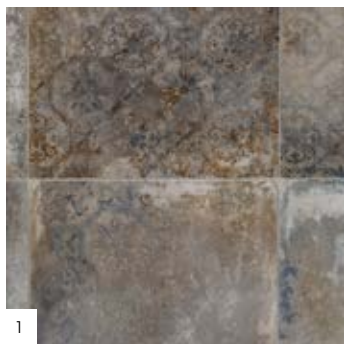
2209 - SISAL GREY



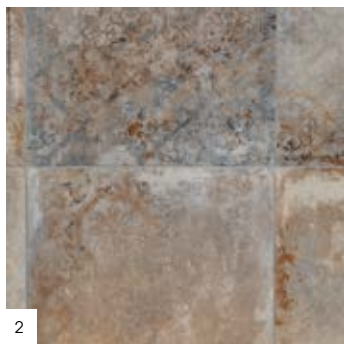
**NEW**

**Wabi** is inspired by the Japanese Wabi Sabi trend that celebrates the patina of time. It's also the return of the terracotta, floors that belongs to the Italian Tuscany, part of an important tradition where the floor are made of clays and the appearance is a warm unique balance.

**JAPANESE  
DESIGNS**



1



2



3



**1-WABI BLUE GREY**

2 m: Code: 1373 2214 - EAN: 3475710463532

4 m: Code: 1393 2214 - EAN: 3475710461293

**2-WABI CARAMEL**

2 m: Code: 1373 2215 - EAN: 3475710463549

4 m: Code: 1393 2215 - EAN: 3475710461309

**3-WABI LIGHT GREY**

2 m: Code: 1373 2213 - EAN: 3475710463525

3 m: Code: 1383 2213 - EAN: 3475710472091

4 m: Code: 1393 2213 - EAN: 3475710461286



## VINTAGE WOOD

## DESIGNS

NEW

**Seaside**, vintage wood design belonging to an old fisherman wharf. Tropical and colonial building with pastel colors paints spoiled by the wind, the sea salt and the rain. Reused random planks with a natural surface look.



### 1-SEASIDE BLUE

2 m: Code: 1373 2216 - EAN: 3475710463563

3 m: Code: 1383 2216 - EAN: 3475710472107

4 m: Code: 1393 2216 - EAN: 3475710461316

### 2-SEASIDE CLEAR

2 m: Code: 1373 2217 - EAN: 3475710463563

3 m: Code: 1383 2217 - EAN: 3475710472114

4 m: Code: 1393 2217 - EAN: 3475710461323

**NEW**

**VINTAGE DENIM** **DESIGNS**

**Rough**, the vintage denim look into a neutral surface where the used surface of a wool rug become familiar and warm at the same time. Fabric look in our allover designed roll improved by a touch feelings coherent with the inspiration material.



1



3



2



4

**1-ROUGH JEANS**

2 m: Code:1373 2220 - EAN: 3475710463594  
4 m: Code:1393 2220 - EAN: 3475710461354

**2-ROUGH LIGHT GREY**

2 m: Code: 1373 2225 - EAN: 3475710463464  
4 m: Code: 1393 2225 - EAN: 3475710461422

**3-ROUGH CHOCOLATE**

2 m: Code: 1373 2219 - EAN: 3475710463587  
4 m: Code: 1393 2219 - EAN: 3475710461347

**4-ROUGH TAUPE**

2 m: Code: 1373 2218 - EAN: 3475710463570  
4 m: Code: 1393 2218 - EAN: 3475710461330



DELICATE

DESIGNS

Sources of serenity and well-being

NEW



1-HARLEM FER

2 m: Code: 1373 1876 - EAN: 3475710466595

3 m: Code: 1383 1876 - EAN: 3475710472138

4 m: Code: 1393 1876 - EAN: 3475710464867

2-HARLEM NATURE

2 m: Code: 1373 1793 - EAN: 3475710320941

3 m: Code: 1383 1793 - EAN: 3475710472121

4 m: Code: 1393 1793 - EAN: 3475710318597



**NEW**

**Original and inspiring vintage floors**

**INSPIRING VINTAGE**

**DESIGNS**



**1-ETNA CLEAR**

2 m: Code: 1373 2099 - EAN: 3475710464058

4 m: Code: 1393 2099 - EAN: 3475710463426

**2-ETNA DARK GREY**

2 m: Code: 1373 2098 - EAN: 3475710464041

4 m: Code: 1393 2098 - EAN: 3475710463419





1



2



3



4

**1-BOUTIC CLEAR**  
 2 m: Code: 1373 2170 - EAN: 3475710464089  
 4 m: Code: 1393 2170 - EAN: 3475710463396

**2-BOUTIC LIGHT GREY**  
 2 m: Code: 1373 2169 - EAN: 3475710464072  
 4 m: Code: 1393 2169 - EAN: 3475710463389

**3-BOUTIC NATUREL**  
 2 m: Code: 1373 2171 - EAN: 3475710464096

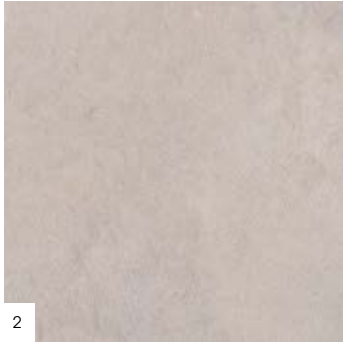
**4-BOUTIC MEDIUM**  
 2 m: Code: 1373 2168 - EAN: 3475710464065  
 4 m: Code: 1393 2168 - EAN: 3475710463372  
 4 m: Code: 1393 2171 - EAN: 3475710463402







1



2



3



4



5



6



7



8



9

**1-HARLEM CLEAR**

2 m: Code: 1373 1808 - EAN: 3475710320910  
 3 m: Code: 1383 1808 - EAN: 3475710337185  
 4 m: Code: 1393 1808 - EAN: 3475710320088

**2-KARONGA CREMA**

2 m: Code: 1259 1657 - EAN: 3475710320729  
 3 m: Code: 1256 1657 - EAN: 3475710339004  
 4 m: Code: 1759 1657 - EAN: 3475710317699

**3-MODENA NATUREL**

2 m: Code: 1373 1991 - EAN: 3475710369506  
 4 m: Code: 1393 1991 - EAN: 3475710369636

**4-HARLEM LIGHT GREY**

2 m: Code: 1373 1788 - EAN: 3475710320934  
 4 m: Code: 1393 1788 - EAN: 3475710318542

**5-KARONGA MOKA**

2 m: Code: 1259 1658 - EAN: 3475710320736  
 4 m: Code: 1759 1658 - EAN: 3475710317705

**6-BROOKLYN BROWN**

2 m: Code: 1373 1786 - EAN: 3475710320798  
 4 m: Code: 1393 1786 - EAN: 3475710318528

**7-HARLEM BLUE**

2 m: Code: 1373 1789 - EAN: 3475710320897  
 4 m: Code: 1393 1789 - EAN: 3475710318559

**8-HARLEM DARK**

2 m: Code: 1373 1787 - EAN: 3475710320927  
 4 m: Code: 1393 1787 - EAN: 3475710318535

**9-BROOKLYN DARK**

2 m: Code: 1373 1784 - EAN: 3475710320804  
 4 m: Code: 1393 1784 - EAN: 3475710318504



1788 - HARLEM LIGHT GREY



1



2



3



4



5



6



7



8



9



10



11

**1-NOMA KOLA**

2 m: Code: 1373 1451 - EAN: 3475710321023

3 m: Code: 1383 1451 - EAN: 3475710337147

4 m: Code: 1393 1451 - EAN: 3475710318139

**2-CASTLE BLOND**

2 m: Code: 1373 1802 - EAN: 3475710369940

4 m: Code: 1393 1802 - EAN: 3475710329739

**3-NOMA CERUSE**

2 m: Code: 1373 0678 - EAN: 3475710321573

3 m: Code: 1383 0678 - EAN: 3475710331282

4 m: Code: 1393 0678 - EAN: 3475710321474

**4-CASTLE BROWN**

2 m: Code: 1373 1846 - EAN: 3475710466601

4 m: Code: 1393 1846 - EAN: 3475710329746

**5-NOMA NATURE**

2 m: Code: 1373 1778 - EAN: 3475710321030

3 m: Code: 1383 1778 - EAN: 3475710337154

4 m: Code: 1393 1778 - EAN: 3475710318146

**6-MACCHIATO NATUREL**

2 m: Code: 1373 2003 - EAN: 3475710371660

4 m: Code: 1393 2003 - EAN: 3475710371639

**7-TIMBER CLEAR**

2 m: Code: 1373 0720 - EAN: 3475710329784

3 m: Code: 1383 0720 - EAN: 3475710331152

4 m: Code: 1393 0720 - EAN: 3475710329760

**8-ELEGANT BROWN**

2 m: Code: 1373 1988 - EAN: 3475710369537

4 m: Code: 1393 1988 - EAN: 3475710369667

**9-WALDEN BROWN**

2 m: Code: 1373 1984 - EAN: 3475710369483

4 m: Code: 1393 1984 - EAN: 3475710369612

**10-TIMBER HONEY**

2 m: Code: 1373 1819 - EAN: 3475710321610

3 m: Code: 1383 1819 - EAN: 3475710337284

4 m: Code: 1393 1819 - EAN: 3475710321511

**11-WALDEN BLOND**

2 m: Code: 1373 1985 - EAN: 3475710369490

4 m: Code: 1393 1985 - EAN: 3475710369629



0678 - NOMA CERUSE





**1-MACCHIATO PEARL**

2 m: Code: 1373 2002 - EAN: 3475710371653  
 4 m: Code: 1393 2002 - EAN: 3475710371622

**2-ELEGANT WHITE**

2 m: Code: 1373 1986 - EAN: 3475710369513  
 4 m: Code: 1393 1986 - EAN: 3475710369643

**3-WALDEN WHITE**

2 m: Code: 1373 1983 - EAN: 3475710369476  
 4 m: Code: 1393 1983 - EAN: 3475710369605

**4-TIMBER WHITE**

2 m: Code: 1373 1820 - EAN: 3475710321627  
 4 m: Code: 1393 1820 - EAN: 3475710321528

**5-NOMA PECAN**

2 m: Code: 1373 1442 - EAN: 3475710321047  
 3 m: Code: 1383 1442 - EAN: 3475710337796  
 4 m: Code: 1393 1442 - EAN: 3475710318122

**6-MACCHIATO BROWN**

2 m: Code: 1373 2004 - EAN: 3475710371677  
 4 m: Code: 1393 2004 - EAN: 3475710371646

**7-LODGE MILK**

2 m: Code: 1373 1439 - EAN: 3475710320996  
 3 m: Code: 1383 1439 - EAN: 3475710337192  
 4 m: Code: 1393 1439 - EAN: 3475710318221

**8-ELEGANT CLEAR**

2 m: Code: 1373 1989 - EAN: 3475710369544  
 4 m: Code: 1393 1989 - EAN: 3475710369674

**9-WALDEN SILVER GREY**

2 m: Code: 1373 1937 - EAN: 3475710354595  
 4 m: Code: 1393 1937 - EAN: 3475710354571

**10-TIMBER DARK GREY**

2 m: Code: 1373 1818 - EAN: 3475710321603  
 4 m: Code: 1393 1818 - EAN: 3475710321504

**11-NOMA CAFE**

2 m: Code: 1373 0679 - EAN: 3475710321009  
 4 m: Code: 1393 0679 - EAN: 3475710318115

**12-ELEGANT GREY**

2 m: Code: 1373 2005 - EAN: 3475710369964  
 4 m: Code: 1393 2005 - EAN: 3475710369957



1



2



3



4



5



6



7



8



9



10



11



12

# TECHNICAL CHARACTERISTICS

DESCRIPTION			
Total thickness	EN ISO 24346 (EN 428)	mm	3.10
Wearlayer thickness	EN ISO 24340 (EN 429)	mm	0.50
Weight / Mass per unit area	EN ISO 23997 (EN 430)	g/sqm	2300
Width of sheet	EN ISO 24381 (EN 426)	m	2 / 3 / 4
Length of sheet	EN ISO 24341 (EN 426)	ml	± 25

CLASSIFICATION			
Norm / Product specification	-	-	EN ISO 26986
European classification	EN ISO 10874 (EN 685)	class	32/41
Sound insulation	EN ISO 717/2	dB	16
Room impact noise	NF S 31074	class	A
Fire rating - Classification	EN 13501-1	class	Cfl-s1
Slip resistance wet: ramp test with oil	DIN 51 130	class	R10

PERFORMANCES			
Wear group	EN 660-2	group	T
Dimensional stability after exposure to heat	EN ISO 23999 (EN 434)	%	0.05
Residual indentation (average value measured)	EN ISO 24343-1 (EN 433)	mm	0.20
Thermal conductivity	EN ISO 10456	W/(m.k)	0.25
Colour fastness	EN 20 105-B02	degree	≥ 6
Surface treatment	-	-	Pureclean
Guarantee residential use		year	15
Guarantee commercial use		year	5

ENVIRONMENT			
TVOC rate 28 days	EN ISO 16000-6	µg/m <sup>3</sup>	< 100
French norm	-	-	A+

CE MARKING			
	EN 14041	   	

Areas of use: domestic use & semi-commercial







## LAYING

Gerflor floor coverings are high quality products developed to last. No warranty can be claimed unless the product has been laid according to the following specifications:

The subfloor must be smooth, hard, dry and clean.

Unroll the floor covering 24 hours before it is due to be installed.

The floor covering should not be laid in rooms where the temperature is below 15°C.

Although HQR is resistant to subfloor moisture we recommend that the floor construction should contain a Damp Proof Membrane.

Can be installed on underfloor heating (up to 28°C).

Cold-weld the joints for perfect water-tightness.

**Thanks to its special patented composition, HQR can be laid directly on most existing subfloors using loose laying.**

### SUBFLOOR PREPARATION:

**On wooden floorboards and on ceramic tiles:** HQR can be laid directly without any subfloor preparation. No levelling compound (finishing) needs to be applied even if there are open joints:

- up to 5 mm wide and a maximum depth of 1 mm in existing tiling
- up to 3 mm wide in wood flooring.

**On textile carpeting (felt or needle punch):** HQR can be installed directly over the existing carpeting as it has excellent resistance to indentation.

**On concrete:** HQR can be installed loose-laid or semi-permanently without any special surface preparation.

Use double-sided tape along the edges of the room. A rough concrete surface should be treated with a smoothing compound beforehand.

### INSTALLATION:

**Loose laying:** Laying without glue recommended below and up to 35 sqm. Use double sided tape or hook & loop strips around the edges and along the joints for a perfect and invisible fit.

**Permanent laying:** Laying with glue mandatory above 35 sqm. Use a single stick acrylic glue (approximately 250g/sqm) and a finely notched trowel and cold weld the joints.

## CLEANING & CARE

**Initial cleaning:** Before commencing a regular maintenance programme, initial cleaning of the floor will be necessary to remove dirt accumulated during laying and other building works. Remove debris, sweep floor and vacuum to remove loose dirt. Wash floor with damp mop and using cold water and neutral detergent. Replace the water and solution if necessary. Remove stubborn marks with a non-abrasive pad.

**Maintenance:** Remove loose dirt with a broom or vacuum cleaner. Wash floor with damp mop and used cold water.

**Cleaning:** Frequency of periodic maintenance will depend on the amount of traffic and on the type of laying. Wash floor with damp mop using cold water and neutral detergent.

**Discoloration:** Discolouration can occur in any resilient floor covering if it comes into contact with pigment-containing substances such as bituminous materials, mastic, asphalt, oil, shoes with black rubber soles, or rubber rollers may cause discoloration.

### HEALTH

- Formaldehyde-free
- Lead-free, no heavy metals
- Solvent-free
- No harmful plasticizer
- Low VOC emission
- No glue
- GFT backing:
- > 95% recycled fibres

### ENVIRONMENT

- 100% recyclable
- ISO 14001
- Soapy water cleaning



**ASIA:** Gerflor Asia  
Tel: +852 9222 6355 - Fax: +852 3006 1449  
e-mail: gerflorasiala@gerflor.com

**AUSTRALIA/NEW ZEALAND:** Gerflor Australasia Pty. Ltd  
Australia Tel: +61 1 800 060 785  
New Zealand Tel: + 64 0 800 630 119  
e-mail: gerflor@gerflor.com.au

**AUSTRIA/SWITZERLAND:** Gerflor GmbH  
Tel: +43 (0)72 29/70 800-0 - Fax: +43 (0)72 29/70 800-218  
e-mail: austria@gerflor.com - switzerland@gerflor.com

**BELGIUM/LUXEMBURG:** Gerflor Benelux  
Tel: +32 (0)3 766 42 82 - Fax: +32 (0)3 766 29 14  
e-mail: gerflorbel@gerflor.com

**CANADA:** Gerflor International  
Tel: +1 438 333 0752 - Fax: +1 438 380 5425  
e-mail: gerflorcanada@gerflor.com

**CHINA:** Gerflor floorings [China] Co. Ltd.  
Tel: +86 21 6357 8918 - Fax: +86 21 6357 8998  
e-mail: gerflorchina@gerflor.com

**CZECH REPUBLIC & SLOVAKIA:** Gerflor CZ s.r.o.  
Tel: +420 725 815 902

**FINLAND:** Gerflor Oy  
Tel: +358 (0) 10 6 17 5150 - Fax: +358 (0) 10 617 5152  
e-mail: info@gerflor.fi

**FRANCE:** Gerflor  
Tel: 00 33 4 75 50 68 68 - Fax: 00 33 4 75 50 69 95  
e-mail: serviceconso@gerflor.com

**GERMANY:** Gerflor Mipolam GmbH  
Tel: +49 (0)22 41-25 30-0  
e-mail: gerflormipolam@gerflor.com

**IRELAND:** Gerflor Ltd  
Tel: +353 (0) 42 966 1431 - Fax: +353 (0) 42 966 1759  
e-mail: gerfloriri@gerflor.com

**ITALY:** Gerflor S.p.A.  
Tel: +39 02 90 40 10 - Fax: +39 02 90 42 74 84  
e-mail: gerfloritalia@gerflor.com

**LATIN AMERICA (Brazil):** Gerflor América Latina  
Tel: +55 11 38 48 20 20  
e-mail: gerflor@gerflor.com.br

**MIDDLE EAST:** Gerflor Middle East  
Tel: +966 3 847 1779 - Fax: +966 3 847 1781  
e-mail: info@gerflorme.com

**NETHERLANDS:** Gerflor Benelux  
Tel: +31 (0)40 266 17 00 - Fax: +31 (0)40 257 46 89  
e-mail: gerflornl@gerflor.com

**OTHER COUNTRIES:** Gerflor International  
Tel: +33 (0)4 74 05 40 00 - Fax: +33 (0)4 74 05 03 13  
e-mail: gerflorcontract@gerflor.com

**POLAND:** Gerflor Polska Sp z o.o  
Tel: + 48 61 823 34 01 - Fax: + 48 61 823 34 33  
e-mail: info@gerflor.pl

**PORTUGAL:** Gerflor Iberia, SA  
Tel: +351 21 843 95 49 - Fax: +351 21 846 55 44  
e-mail: gerflorportugal@gerflor.com

**RUSSIA:** Gerflor zao  
Tel./Fax: + 7 495 785 23 71  
e-mail: gerflorrussia@gerflor.ru

**SCANDINAVIA:** Gerflor Scandinavia a.s.  
Tel: + 47 64 95 60 70 - Fax: + 47 64 95 60 80  
e-mail: gerflorscand@gerflor.no

**SPAIN:** Gerflor Iberia, SA  
Tel: +34 91 653 50 11 - Fax: +34 91 653 25 85  
e-mail: gerfloriberia@gerflor.com

**UNITED KINGDOM:** Gerflor Ltd  
Sample service: Contractuk@gerflor.com  
Office Tel: + 44 (0) 1926 622 600 - Fax: + 44 (0) 1926 401 647

**USA:** Gerflor USA  
Tel: 877 GERFLOR (437 3567) - Fax: 847 394 3753  
e-mail: info@gerflorusa.com

**HQR**  
EXCLUSIVE COLLECTION

**THE DESIGN WAY**  
HIGH SEDUCTION HIGH TRAFFIC



Remain connected !



www.gerflor.com

**Gerflor**  
theflooringroup



