



Contact 350



Contact 200



## CONTACT



### 350 OR 200 PROTECTION PLATES

#### Applications

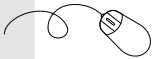
Both resistant and decorative, the Contact protection plates prevent damage to doors and walls exposed to abrasion by furniture, chairs and repeated impact from trolleys in corridors, bedrooms and waiting rooms in clinics and hospitals, schools, universities, hotels, restaurants and offices. It also matches the Impact protection rails.

#### Specification

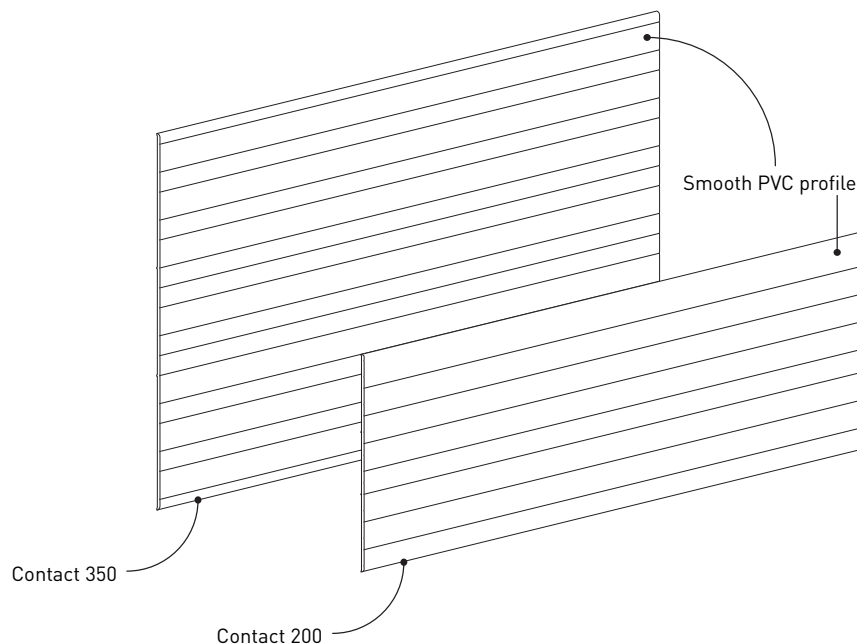
- Description: adhesive protection plates (Contact 350 or 200 as manufactured by Gerflor) comprising smooth and antibacterial PVC profiles with a depth of 350 or 200 mm, 2.5 mm thick. PVC profiles achieve Bs2d0 fire rating, feature solid colour and a smooth surface finish with decorative grooves. A protective film is specified to minimise cleaning before acceptance. Sections are delivered with 2 or 3 strips of adhesive foam for fixing.
- Environment: No heavy metals and no substance potentially subjected to any

REACH restriction are used in its manufacture, nor PBT/PBA. The calcium-zinc thermal stabilisation process is used. The emission level of volatile substance in inside air has been tested according to ISO 16000-6 and is very low (A+) according to the french regulation (23 march 2011 nr 2011-321 Decree and 19 April 2011 Order). 100% of the product are recyclable.

- Colour: selected by architects from manufacturer's standard range.
- Installation method: adhesive. Gerflor universal mastic glue is recommended for stronger fixing.



Specification and technical drawings can be downloaded from our website [www.gerflor.com](http://www.gerflor.com)

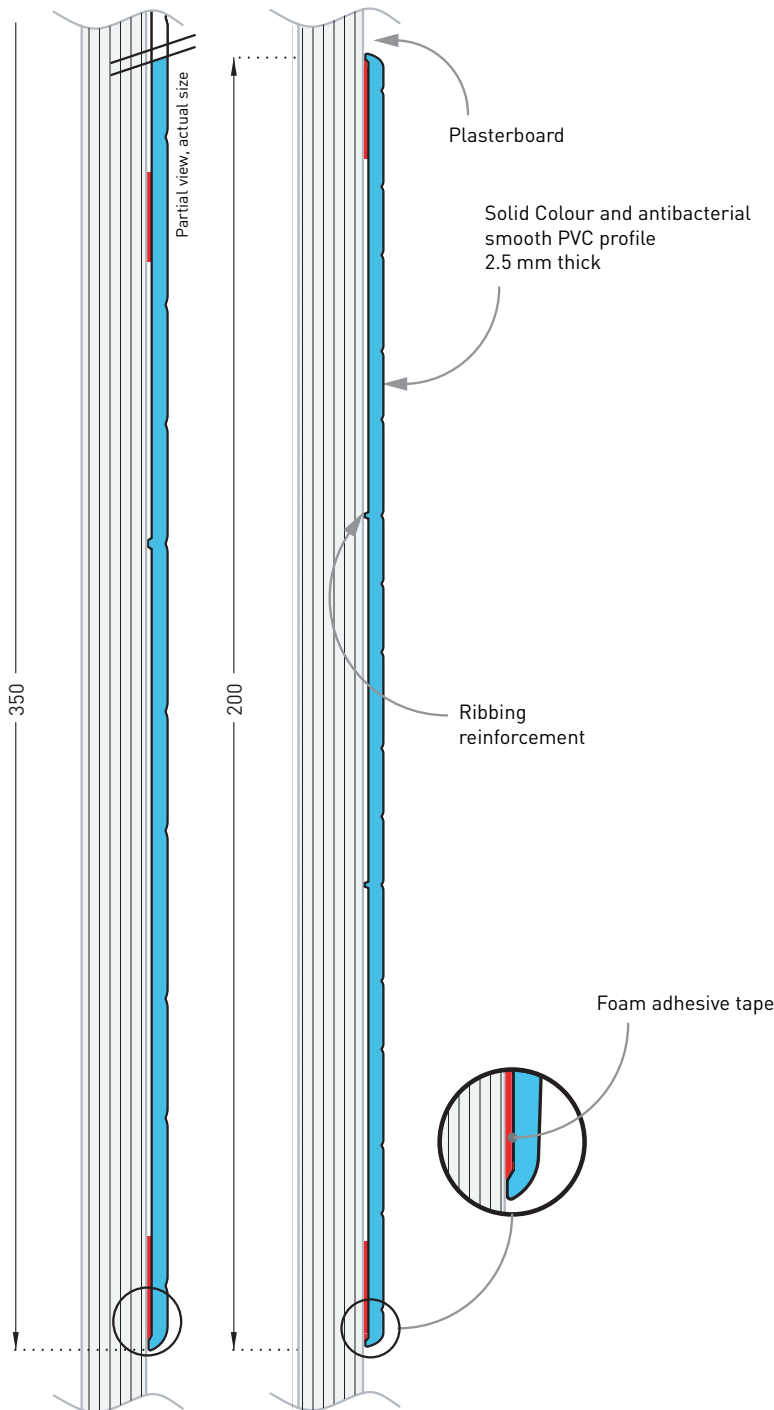


Contact 350  
15 colours\*



\*and 16 colours on request with a minimum order quantity

Contact 200  
31 colours



**Description**

- Model: Contact 350 or 200 adhesive protection plates
- Section depth: 350 or 200 mm
- Thickness: 2.5 mm
- Length: 4 m
- Material: Antibacterial and Bs2d0 fire-rated PVC, solid colour
- Surface finish: smooth with decorative grooves
- Fixing: adhesive foam strips reinforced with Gerflor universal mastic glue
- Colours: 31 standard for Contact 200 and 15 for Contact 350